

The Organic Gardening catalogue

garden organic

Dobies

Growing since 1894

Seeds, Plants & Equipment 2024

Spring Edition

All our plants
are Peat Free
see page 2



Courgette **Black Beauty**

A bee friendly &
strong growing
organic variety

Only £2.99

See page 14

Garden Organic members

ENJOY 10% OFF

everything in this catalogue!

If you're not already a member see page 46 for details

organiccatalogue.com

0844 693 4977

COFEB24

Welcome to the NEW 2024 Organic Gardening Catalogue

YOUR SPECIAL OFFERS

USE OFFER CODE: **SUOC224A** when ordering to receive offers



£2.99 with any order

Tomato Grow Bag Collection
KF2855 3 Postiplugs Usually £6.99



£4.99 with any orders over £20

Spring Planting Garlic Flavor
KC2330 2 Bulbs Usually £7.99



£4.99 with any orders over £40

Raspberry Glen Ample
KC3040 3 Canes Usually £9.99



£4.99 with any orders over £55

Asparagus Cijnilm
KB2058 5 Crowns Usually £11.99

Contents

- 3-5 Best Selling Garlic, Shallot & Onion Sets
- 6-23 Vegetable Seeds A-Z
- 23 Green Manure
- 24-25 Seed Potatoes
- 26-28 Vegetable Plants A-Z
- 29-31 **6 for £25 PICK & MIX VEG PLANTS OFFER**
- 32-33 Garden Ready Veg Plants
- 34-37 **Grafted Veg PICK & MIX 3 OR MORE for £5 each**
- 38-40 Bare Root Soft Fruit
- 41 Organic Soft Fruit
- 42-43 Plant Protection
- 44-45 Compost & Feeds
- 46 **Join Garden Organic!**
- 47 Order Form

Best Selling Garlic, Shallots & Onion Sets

Organic

Onion Sturon

An RHS Award of Garden Merit variety producing well sized semi-round bulbs with good keeping qualities. Onion 'Sturon' is a traditional variety that has become a favourite for its reliability. Great for any meal you wish to add them to like stews and salads. HHBb. 45cm (18in). Harvest: Jul-Aug. Sun. Kitchen Garden. Del: Feb-Mar.

KC2301	250g organic	£6.99
KC2334	1.25kg organic	£16.99

Loved for its delicious flavour



Organic

Organic varieties can be identified by our Organic tag. Seed varieties without the tag are conventional seed supplied by Dobies



Peat free plants

All potted and plug fruit & veg plants featured within this catalogue have been raised in Peat Free growing media.



Giving your plants the best possible start

For only £1 we can treat your whole plant order with Maxicrop, just tick the box on your order form

Maxicrop Original Organic Seaweed Extract

- Strong healthy root system
- Greener, healthier leaves
- Better establishment
- Improved root growth
- More energy for growth
- Greater nutrient availability
- Reduced stress during transit

KA4022	500ml	£11.99
KB0192	2 x 500ml	£19.99



Organic

Onion Red Baron

This delicious onion has a stronger flavour than most varieties, makes an attractive addition to salads. Hardy when planted in early spring and stores well. HA. 45cm (18in). Harvest: Aug-Sept. Sun. Kitchen Gardens. Del: Feb-Mar.

KC2302	250g organic	£7.99
KC2335	1.25kg organic	£34.95



BUY 10 SAVE £6.99

Garlic Elephant

As the cloves are much larger than conventional garlic with a milder taste, it makes them suitable for a wide choice of culinary uses, especially roasting! HBB. 90cm (35in). Harvest: Jul-Aug. Sun. Kitchen Gardens. Del: Mar-Apr.

14538	5 cloves	£12.99
KC2544	10 cloves	£18.99

1. Telephone **0844 693 4977**

Calls charged at 7p per minute plus your phone company's access charge

Dobies
www.dobies.co.uk

2. Post Fill in the order form on page 83 and post to:
Organic Gardening, Poplar Lane, Ipswich, Suffolk IP8 3BU

Since 1894, Dobies have been supplying everything for the keen gardener. Dobies have always provided a quality offer at a "Down to Earth" price, and we are really pleased to now be running the Organic Gardening Catalogue.

3. Online **organiccatalogue.com**

Need to speak to us?

Call customer services on **0333 240 0776**
7 days a week, 9am-6pm
email: enquiries@organiccatalogue.com
Charges to 03 numbers are the same as standard UK landline numbers starting in 01 or 02 and mobile providers may vary.

The Organic Gardening catalogue
garden organic

For the complete range go to **organiccatalogue.com** or call **0844 693 4977**

Garlic, Shallots & Onion Sets

Garlic

Our Garlic is selected for Northern European conditions.

Plant Oct-March spacing 15cm between cloves. 150g will plant about a 4m row. When the first six leaves have turned yellow, lift and dry in the sun or in an airy shed. Ideally plant soon after receipt, otherwise store in a cool dry place. Weights quoted are when packed, some drying out may occur. See individual garlic varieties for availability and delivery.

Hardneck Garlic originates from climates with colder winters. It produces larger cloves with a stronger and more interesting flavour, but stores only until mid-winter. Flower stalks with edible 'scapes' appear readily.

Softneck Garlic generally produces smaller, more tightly-packed cloves and has better storage qualities than hardneck varieties. It does not produce flower stalks unless stressed.



**BUY 6
SAVE
£6.98**

Picardy Wight

Originating from Picardy in Northern France, Garlic 'Picardy Wight' is suitable for spring planting. This softneck variety produces strong flavoured bulbs with long storage potential.

HHBb. 60cm (24in). Harvest: Jul-Aug. Sun. Kitchen Garden. Del: Mar-Apr.

14106	2 bulbs	£8.99
KB1890	4 bulbs	£14.99
KC2356	6 bulbs	£19.99



Cledor

The white-skinned bulbs of Garlic 'Cledor' produce 10-16 pinkish delicious beige cloves per bulb. Produced in France in virus-free soil, this Rose d'Auvergne type stores well over a long period.

HHBb. 60cm (24in). Harvest: Jun-Jul. Sun. Kitchen Garden. Del: Mar-Apr.

KC2332	2 bulbs	£8.99
KC2365	4 bulbs	£14.99



Flavor

An Italian pink type, produced in France, that matures in late July. The white-skinned bulbs each contain 9-16 pretty pink cloves that store for a long time once opened.

HHBb. 60cm (24in). Harvest: Jul. Sun. Kitchen Garden. Del: Mar-Apr.

KC2330	2 bulbs	£7.99
KC2363	4 bulbs	£12.99

Garlic Lovers Collection (Spring Planting)

KC2360	6 bulbs	£19.99
--------	---------	--------



Solent Wight

Garlic 'Solent Wight' is known for its exceptional flavour and bouquet which it retains during cooking.

HHBb. 60cm (24in). Harvest: Jul-Aug. Sun. Kitchen Garden. Del: Feb-Mar.

KC2325	2 bulbs	£11.99
KF5283	4 bulbs	£14.99
KC2355	6 bulbs	£19.99



Germidou

Well-known and reliable variety from French production, well adapted to British conditions. This softneck variety produces large, white bulbs with a mild but still rich flavour.

HHBb. 60cm (24in). Harvest: Jun-Jul. Sun. Kitchen Garden. Del: Feb-Mar.

14207	2 bulbs	£8.99
KC2543	4 bulbs	£14.99

Onion Sets

Easier than sowing seeds, Onion Sets are immature onions grown from seed, then lifted and dried. When re-planted, they put down roots and grow on. Plant in firm soil, 10-15cm apart from Feb-Apr, leaving only the tip visible. Packs contain minimum 130 onions, except where stated. All are peat free! 🚚 Delivery from January. Order up to end of April unless otherwise stated.



Organic

Centurion

Onion 'Centurion' is the deserved winner of an RHS AGM award displaying good vigour and high yields. Begin harvesting golden-skinned onions from June. Allow them to dry thoroughly and 'Centurion' will reliably store for many months. **'Which?' Best Buy variety**

HHBb. 45cm (18in). Harvest: Jul-Aug. Sun. Kitchen Garden. Del: Feb-Mar.

KC2306	250g organic	£9.99
KC2339	1.25kg organic	£12.99



**BUY
1.25kg
SAVE
£34.96**

Keravel Pink This beautiful rosy onion with pinkish flesh is associated with the French onion sellers known affectionately as 'Onion Johnnies'. These Breton farmers travelled on bicycles selling their distinctive pink onions door to door.

HHBb. 45cm (18in). Harvest: Jul-Aug. Sun. Kitchen Garden. Del: Mar-Apr.

KC2304	250g	£11.99
KC2337	1.25kg	£24.99



**FROM
£7.99**

Organic

Jet Set Fl

If you want to get your onion harvest off to a quick start then try Onion 'Jet Set' Fl. Maturing faster than most other varieties, 'Jet Set' is resistant to bolting and produces uniform, yellow-skinned, round onions.

HHBb. 45cm (18in). Harvest: Jul-Aug. Sun. Kitchen Gardens. Del: Mar-Apr.

KC2305	250g organic	£7.99
KC2338	1.25kg organic	£29.99



Stuttgarter Giant

An ever popular variety producing firm, semi-flat bulbs with an excellent flavour. Onion 'Stuttgarter Giant' performed well in commercial assessments against 'Red Baron'.

HHBb. 45cm (18in). Harvest: Aug. Sun. Kitchen Garden. Del: Mar-Apr.

46531	250g	£5.99
46551	500g	£8.99



Paul's Top Tip



Stop birds from pulling out your sets by covering them with fleece or netting until they have rooted and have sturdy shoots growing.

Paul Hodge, Horticultural Expert

Organic

Shallot Red Sun

Attractive red tinged skin, Shallot 'Red Sun' is arguably the best of the red shallots. Producing good yields of crisp, white fleshed bulbs of excellent flavour for cooking, salads or for pickling.

HHBb. 35cm (14in). Harvest: Aug. Sun. Kitchen Gardens. Del: Feb-Mar.

KC2314	400g organic	£8.99
KC2351	1.2kg organic	£23.97

Vegetable Seeds A-Z

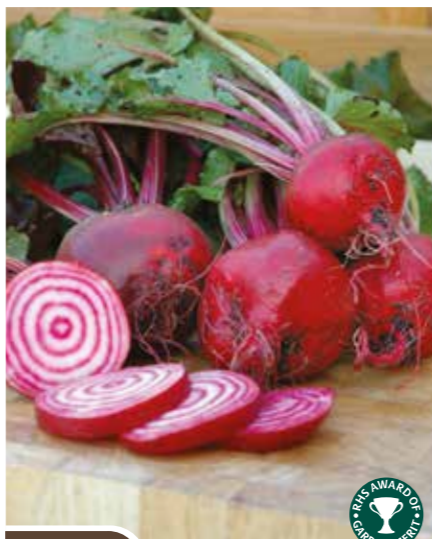
Beetroot

Crops 12-16 weeks from sowing. Unless stated, sow late Apr to Jul. Harvest Aug-Nov.
 + A proven superfood! Roots are rich in potassium and folate plus some vitamin C. The young leaves are rich in beta carotene, calcium and iron.
 ✂ Don't waste the leaves, use them like spinach! Cooking can actually increase the nutrient value. Cook the young leaves or use them in salads.

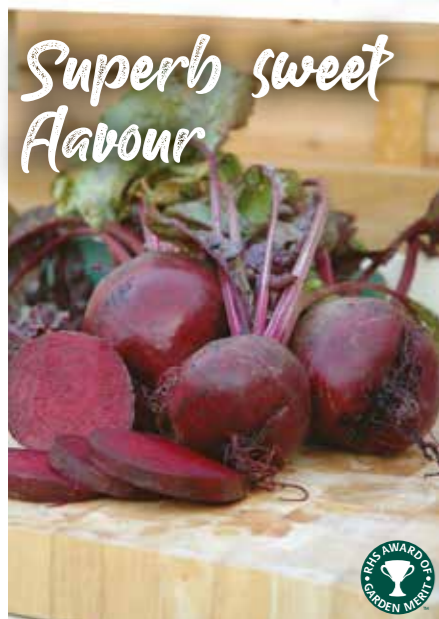
Globe varieties Best harvested between a golf and tennis ball size.



Rhonda Uniform, intense red globe shaped roots, retaining a smooth texture grown to full size, but also suited for baby beet.
 30cm (12in). Sow: Apr-Jul. Harvest: Aug-Oct.
780064 **265 seeds** **£2.99**



Chioggia Old traditional Italian beetroot. Rosy pink skin, flesh white with concentric pink circles.
 15cm (6in). Sow: Mar-Jul. Harvest: Aug-Nov.
780051 **145 seeds** **£2.99**



Boltardy Resistant to bolting and recommended for early sowing. Suitable for organic growing. Ideal for freezing. Certain to be a favourite in no time at all!
 30cm (12in). Sow: Mar-Jul. Harvest: Jun-Oct.
431519 **370 seeds** **£1.99**
431535 **1110 seeds** **£4.49**



Rote Kugel 2 Beetroot 'Rote Kugel 2' is a high yielding, early maturing variety with good bolt resistance. Produces large, globe-shaped, well coloured beets which are potential show bench winners. The purple flushed leaves are delicious in salads.
 30cm (12in). Sow: Apr-Jul. Harvest: Jun-Oct.
700012 **145 seeds** **£3.49**

Asparagus

+ Rich in vitamins A, C & E. Best eaten soon after harvest.



The first asparagus from seed, which can provide a light harvest in its first year!
Ariane FI A first-class asparagus producing tall, slender, high quality spears with tight green buds. And the flavour is superb! Delicious steamed, stir-fried or sautéed and topped with butter!
 50cm (19in). Sow: Feb-Apr. Harvest: Aug/May-Jun.
431440 **10 seeds** **£0.89**

Aubergine

+ Contains vitamins E & K. High in potassium, folate, magnesium and fibre.
 ✂ For best flavour eat within 2-3 days of picking.



Best seller
Black Beauty Aubergine 'Black Beauty' provides an excellent yield of shiny, near-black skinned fruit throughout the summer season which can be used in all kinds of delicious Mediterranean recipes.
 75cm (30in). Sow: Feb-Apr. Harvest: Aug-Oct.
780004 **47 seeds** **£2.99**

Broad Bean

Harvest when seed shape is just visible through the pod. For early crops sow recommended varieties late October-November or in January, in a warm sheltered position. Sowings for summer cropping should be made February-May. Sow in double rows 23cm apart in the row and between rows and 5cm deep. Allow 90cm between each pair of rows (60cm for The Sutton).

+ Source of vitamins A, C & E, protein & fibre.



Imperial Green Longpod Excellent length of pod and table quality. A fine green seeded broad bean and also excellent for deep freezing. **'Which?'** Best Buy variety.
 90cm (35in). Sow: Feb-Apr. Harvest: May-Aug.
430750 **65 seeds** **£3.49**
430760 **130 seeds** **£4.99**



Crimson Flowered A heritage Broad Bean variety with stunning crimson flowers, followed by a good crop of short, upright pods and delicious beans.
 90cm (35in). Sow: Feb-May. Harvest: May-Jul.
435175 **50 seeds** **£3.49**

ONLY £2.99

Organic

Ratio Very early to crop and high yielding. The pods are well filled with bright beans. 70-80cm (28-31in). Sow: Feb-May. Harvest: May-Aug.

780072 **40 seeds** **£2.99**

Paul's Top Tip

Once the first beans have set, remove the top of the plant to prevent black fly becoming a problem. Don't forget the tops can then be eaten as a delicious bonus crop. Paul Hodge, Horticultural Expert



Karmazyn A must for anyone looking for something different! Karmazyn is a compact-growing broad bean that will produce a bountiful crop of tasty and colourful beans! **'Which?'** Best Buy variety.
 30cm (12in). Sow: Nov-Jul. Harvest: Jun-Aug.
430839 **40 seeds** **£2.99**



The Sutton The Sutton is a wonderful dwarf broad bean variety. Ideal for exposed sites, this vegetable plant will produce very large numbers of pods. Each pod contains four or five beans of superior quality.
 30cm (12in). Sow: Nov-Jul. Harvest: Jun-Aug.
430777 **60 seeds** **£2.99**
430780 **120 seeds** **£4.49**

French Bean

Crops 10-16 weeks from sowing. Delicious, productive and relatively easy to grow! For early crops sow under glass in March and outside from April onwards. Pick regularly when the pods are young to encourage further cropping. Keep well watered in hot, dry conditions. **+** Good levels of vitamin A **✂** Slice or cook smaller pods whole

Climbing French Bean

Grow outdoors (or in a tunnel or greenhouse for late crops) in the same way as runner beans.

Organic

Cobra The 'Cobra' is a delicious french climbing bean that will be produced in profusion right through to autumn if picked regularly.
1.8m (6ft). Sow: Apr-Jun. Harvest: Jul-Oct.

780011 50 seeds **£3.99**



Organic

Blauhilde Enjoy delicious bunches of stringless, purple, fleshy pods picked straight from your garden.
1.8m (6ft). Sow: Apr-Jul. Harvest: Jul-Oct.

780010 90 seeds **£3.49**



Organic

Neckargold Lots of tasty, stringless, yellow pencil pods which can tolerate unfavourable and variable weather conditions - just right for growing in the UK!
2m (7ft). Sow: May-Jun. Harvest: Jul-Oct.

780016 90 seeds **£3.49**



Organic

Climbing French Bean Saver Pack

780841 180 seeds SAVE £2.99 **£3.99**

Dwarf French Bean

Low growing, bushy plants ideal for exposed gardens. Sow in rows 30-38cm apart for conventional growing (or reduce to 20cm if growing in raised beds), spacing the seeds 15cm wide and 5cm deep. Extend the season by growing under cloches or in a greenhouse.



Organic

Domino Produces tasty, uniform 12-13cm pods on 50cm high plants. High yielding, resistant to halo blight and bean mosaic virus.
45cm (18in). Sow: May-Jun. Harvest: Jul-Oct.

780027 75 seeds **£2.99**



Organic

Compass Ideal for growing in vegetable beds and equally happy in containers or grow bags, you will be harvesting crisp green beans from July to October.
45cm (18in). Sow: Mar-Jul. Harvest: Jul-Oct.

780026 75 seeds **£2.99**



Organic

Faraday Slender, deep green beans with a fine flavour, producing high yields of uniform pencil pods 13-15cm long. With excellent disease resistance, this variety really is a must for any keen bean grower.
45cm (18in). Sow: Apr-Jun. Harvest: Jul-Sept.

780030 100 seeds **£2.99**

Runner Bean

Crops 12-16 weeks from sowing. Tasty, nutritious and easy to grow! Unless stated, sow under cover in April for early crops, planting out in late May. For early crops sown outdoors, protect with fleece or cloches to warm the soil and protect the young plants. For tall types in rows, sow outside 5-7.5cm deep, spacing seeds 15cm apart in double rows 45cm apart. Allow a further 1.5m between double rows and keep well-watered. (Alternatively if space is limited, sow in circles and grow up canes in a 'wigwam' format.) Insert long cane supports or netting soon after germination/planting. Plant height of 1.8-2.1m.

+ Good levels of vitamin C, folate, iron & fibre. **✂** Steam or boil for less than 3 minutes to preserve vitamins. Ideal for freezing.

Self-pollinating 'Super' Runner Beans

These 'super beans' are the result of 15 years of British breeding to carefully combine the best characteristics of French beans and runner beans. These outstanding varieties will crop heavily even when the weather is poor and there aren't a lot of bees or other pollinators



Moonlight This profusely white-flowering variety combines the valuable characteristics of French beans with those of runner beans, resulting in extra smooth, very fleshy, stringless pods up to 25cm (10in) long.
3m (10ft). Sow: Apr-Jun. Harvest: Aug-Sept.

431189 35 seeds **£3.99**
431185 TWIN PACK **£5.99**



Firestorm The first completely self fertile scarlet-flowered runner bean! Runner Bean 'Firestorm' produces stringless beans which are slightly thicker, sweeter and more tender than other varieties.
3m (10ft). Sow: Apr-Jul. Harvest: Jul-Oct.

431190 30 seeds **£3.29**

Heavy cropping, stringless, and superb quality

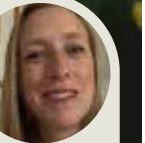


Organic

Lady Di Enjoy heavy crops of tender runner beans over a long season. A red flowered variety producing completely stringless, 30cm (12in) long pods.
3m (10ft). Sow: Apr-Jun. Harvest: Aug-Sept.

780044 40 seeds **£3.49**

Sue's Top Tip



Harvest pods when they are young and tender, this encourages more to be produced and stops plants setting seed.

Sue Russell, Horticultural Expert



Organic

Scarlet Emperor Heavy crops of smooth textured, dark-green pods, each reaching 30-37cm (12-15in) in length. Excellent for freezing and for exhibition.
3m (10ft). Sow: Apr-Jul. Harvest: Aug-Sept.

780048 50 seeds **£3.49**

Edamame (Soya) Bean

+ High in protein.
✂ NB. Must always be cooked and never eaten raw.



Organic

Summer Shell This variety will restore your faith in growing this versatile bean. It's a vast improvement over old varieties, ensuring successful results! It's also earlier cropping than other varieties and is ideal for vegetarians. These delicious, nutritious beans can be cooked from fresh or dried and stored 60cm (24in). Sow: Apr-Jun. Harvest: Aug-Oct.

780037 40 seeds **£3.49**

Broccoli

Crops 12-16 weeks from sowing. Crisp, healthy green heads followed by succulent side shoots. Sow 18mm deep on a finely raked 'seedbed'. Can also be started in trays and planted out later. Plant firmly in their final positions 45cm apart.
 + Hailed as a superfood. High in vitamins A & C and a good source of iron.

Calabrese Varieties



Organic

Purple Sprouting Santee F1 Very hardy and reliable. Purple shoots mature March-April. RHS Award of Garden Merit winner. 90cm (36in). Sow: Apr-May. Harvest: Mar-Apr.

780085 **38 seeds** **£4.49**

Sue's Top Tip



Double your harvest by leaving plants in the ground after harvesting the main head, this will result in tasty side shoots developing in a couple of weeks time.
 Sue Russell, Horticultural Expert



Covina F1 Produces high-quality, dark green, heads over a long season. An excellent source of vitamin C and can be blanched and frozen for later use. 40-50cm (16-20in). Sow: Feb-Apr. Harvest: Jun-Oct.

780871 **30 seeds** **£2.99**



Belstar F1 The well domed, small beaded heads of Broccoli 'Belstar' have an excellent flavour, and a healthy green colour. 45cm (18in). Sow: Apr-Jun. Harvest: Jun-Oct.

780647 **72 seeds** **£3.49**

Brussels Sprout

Crops 30-36 weeks from sowing. Tasty autumn/winter/spring vegetable. For maincrops, sow on a finely raked 'seed bed' outdoors early March-late April. For early crops, sow in frames or under cloches during February. Transplant to final growing positions at 60-90cm apart in well-firmed soil May-early June. Harvest September-February.
 + Good source of vitamin C.
 ✂ For fresh use or freezing.
 Try stir frying as an alternative to steaming/boiling.

F1 Hybrid Varieties



Doric F1 Productive, late maturing. Tight, tasty sprouts from December to February. 90cm (3ft). Sow: Apr-May. Harvest: Dec-Feb.

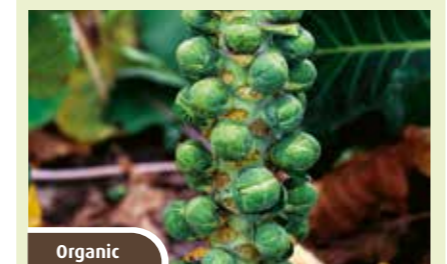
780091 **35 seeds** **£3.99**



Igor F1 Is exceptionally high-yielding, with tall, strong stems packed with sprouts with a sweet, nutty flavour. This very hardy variety stands well even in the coldest weather. 1m (3ft). Sow: Apr-May. Harvest: Dec-Mar.

780088 **48 seeds** **£2.99**

Standard Varieties

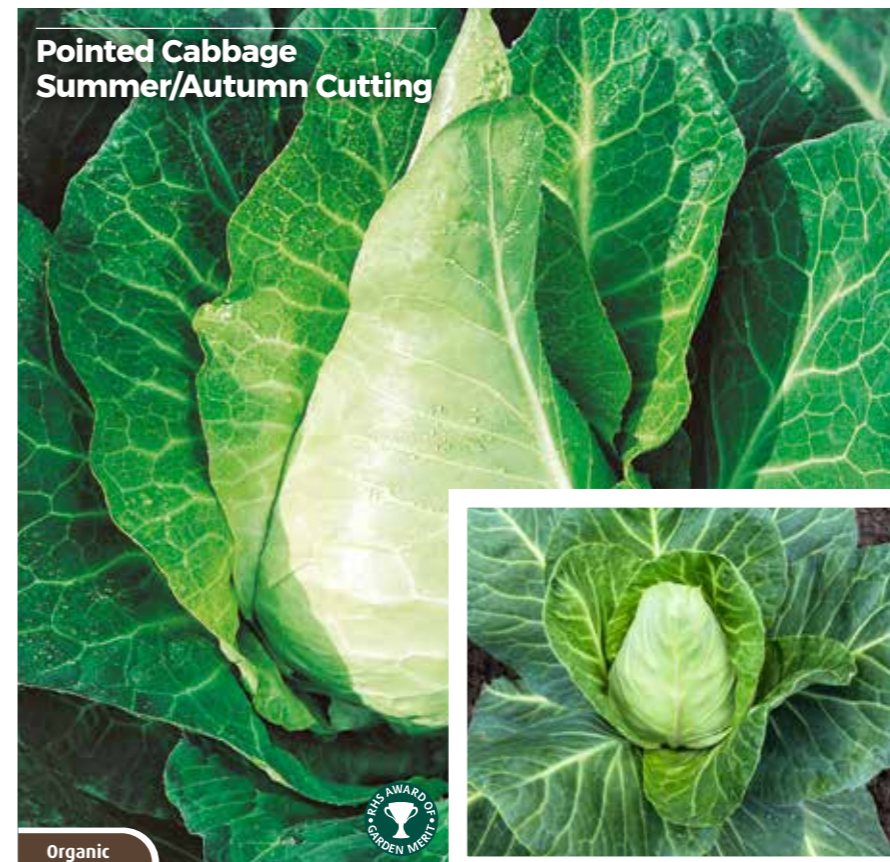


Groninger Second early, noted for its great tasting sprouts, particularly after the first frost. 1.2m (4ft). Sow: Apr-May. Harvest: Oct-Mar.

780093 **145 seeds** **£2.99**

Cabbage

A careful choice of varieties can give you year round cropping! Cabbage are listed under separate headings according to type. Seed of all varieties can be sown 1.8cm deep in drills (shallow grooves) 15cm apart on prepared seed beds outdoors. Alternatively sow in trays and plant out later. + An excellent source of vitamin C.



Pointed Cabbage Summer/Autumn Cutting

Organic

Filderkraut Huge arrow-shaped heads, ideal for grating for sauerkraut and salads. 30-50cm (12-20in). Sow: Apr-May. Harvest: Nov-Dec.

780114 **95 seeds** **£2.49**



Greyhound A favourite early cabbage, with pointed heads of excellent flavour. 30cm (12in). Sow: Feb-Jul. Harvest: Jun-Oct.

433137 **450 seeds** **£1.99**
433142 **1350 seeds** **£4.49**

Red Cabbage



Amarant (Langedijker Bewaar 2) Fast growing, delicious red cabbage with round, compact heads. Long harvest period mid Jun-Sept. 40cm (16in). Sow: Feb-Apr. Harvest: Jun-Sept.

780101 **50 seeds** **£1.99**

Savoy Cabbage Autumn/Winter Cutting



Vertus An Ormskirk type with the ability to stand severe frosts. An excellent green vegetable when little else is available. 30cm (12in). Sow: Jun-Jul. Harvest: Dec-Feb.

780122 **190 seeds** **£2.39**

Cauliflower For the earliest summer crops, sow relevant varieties from September and overwinter in a cold frame, planting outdoors in spring. Alternatively for slightly later maturity sow under glass at 10-15°C (50-60°F) February-March. Harden off plants before planting outdoors. For maincrops sow direct outdoors, 1.8cm deep, in a prepared seed bed March-May. ✂ Ideal for slimmers as low in calories. + Good vitamin C content.

Summer/Autumn Harvest



Neckarperle This reliable variety can be harvested from summer right through to autumn. 60cm (24in). Sow: Feb-May. Harvest: Jun-Oct.

780875 **30 seeds** **£3.49**

Autumn/Winter Harvest



Belot F1 One of the best for late autumn/early winter harvest. Stands well in cold weather. 60cm (24in). Sow: Apr-May. Harvest: Oct-Dec.

780156 **38 seeds** **£2.99**

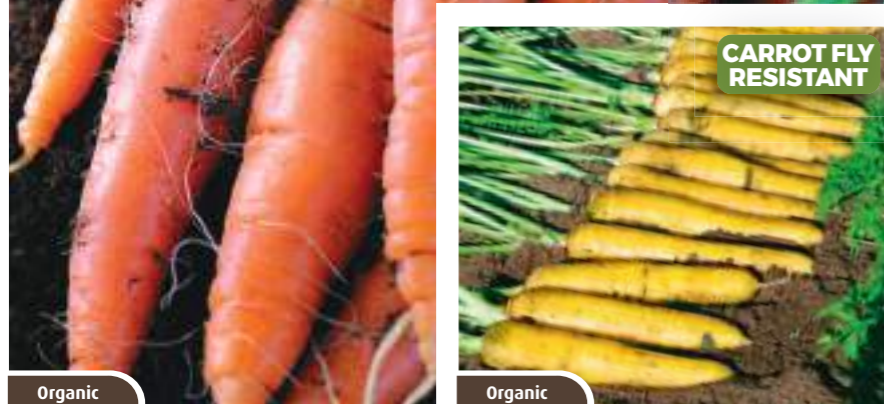
Italian romanesco



Romanesco A superb alternative to white cauliflower, with attractive florets in an unusual lime-green colour. 45cm (18in). Sow: May. Harvest: Oct-Dec.

780161 **190 seeds** **£2.39**

Carrot For the earliest crops (e.g. Amsterdam Forcing) sow in frames or under cloches February-March. Start outdoor sowings from early March choosing a warm and well-drained position. For maincrops, sow April-July. Sow thinly (to avoid attack from Carrot Fly) into a finely raked, moist soil, 1.8cm deep, in rows 23-30cm apart. Alternatively for raised beds etc. grow in small blocks alleviating the need for rows. Carefully, thin seedlings if necessary until young plants are 5-7.5cm apart.
 † Carrots are high in vitamin A which is good for rejuvenating your sight - so they really do help you to see in the dark!



Autumn King 2
 A large, popular, late maturing carrot producing good-sized, cylindrical, red-cored roots of extra fine quality. A heavy cropper that's good for storing too. 30cm (12in). Sow: Mar-Jul. Harvest: Aug-Nov.
780126 400 seeds £2.39

Yellowstone
 Easy to grow yellow carrot. Great flavour raw or cooked. Tapered roots with a succulent, crunchy texture. Good carrot fly tolerance. 30cm (12in). Sow: Apr-Jul. Harvest: May-Oct.
780152 475 seeds £2.99



Amsterdam Forcing
 The earliest variety for protected or outdoor sowings in containers or garden. Medium length, high quality, blunt-ended roots. 30cm (12in). Sow: Nov-Jul. Harvest: Feb-Oct.
780124 400 seeds £2.99



Nantes 2 Produces blunt tipped, medium length roots of about 15cm (6") long. This virtually coreless variety has a rich orange colour and sweet crunchy taste. 30cm (12in). Sow: Mar-Jul. Harvest: Jul-Oct.
780142 475 seeds £1.99



Berlicum High quality long cylindrical red-orange roots. Excellent texture. Uniform carrots with up to 25cm long, ideal for slicing. 30cm (12in). Sow: Apr-Jul. Harvest: Jul-Oct.
780129 475 seeds £2.99



Flakkee A selection of deep orange, heavy conical carrots up to 27cm in length, with strong foliage. Keeps well in the ground and stores for a long period. 55cm (22in). Sow: Apr-Jul. Harvest: Jun-Nov.
780136 475 seeds £2.39

Chard (Spinach Beet, Leaf Beet)

Harvest over many months as baby leaf for salads, large leaves as a spinach substitute and even the leaf midrib can be cooked like asparagus. Crops 11 weeks from sowing.
 † Leaves/stems high in vitamin A.
 † Eat young leaves raw in salads/sandwiches.



Moroccan
 Refreshing flavour between corn salad and lettuce, rich in vitamins, potassium and magnesium. Eat fresh or as soup. Sow in spring or autumn. 20-25cm (8-10in). Sow: Mar-Aug. Harvest: May-Sept.
780295 475 seeds £2.99



Winter
 A hardy variety, rich in vitamins and minerals. Adds a spicy flavour to salads and vegetables. 60cm (24in). Sow: Apr-May/Aug-Sept. Harvest: May-Aug/Nov-Mar.
780297 475 seeds £2.39



Green Utah
 Delicious crisp, smooth long stalks and good inner heart. Mid green colour, no need for blanching. Good disease resistance. 45cm (18in). Sow: May-Jun. Harvest: Aug-Sept.
780169 475 seeds £2.99



Tango A self-blanching variety of celery, it produces lovely, smooth green stems with good flavour and texture for that well-loved celery crunch. 45cm (18in). Sow: Mar-May. Harvest: Aug-Oct.
780174 190 seeds £3.49



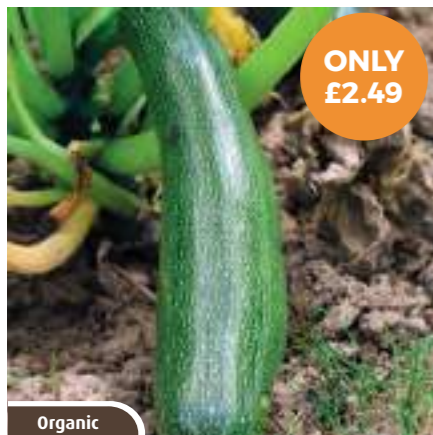
Chicory Rossa Di Treviso
 Long pointed green foliage that turns red as the weather gets colder. Adds colour, texture and unique flavour. 20cm (8in). Sow: Mar-Sept. Harvest: Jun-Dec.
780188 240 seeds £2.99



Granon Granon has wide, smooth, fleshy mid-green leaves with a good flavour. Suitable for growing outdoors in all seasons in most areas. 15cm (6in). Sow: Aug-Oct. Harvest: Oct-Feb.
780193 335 seeds £2.39

Courgette

High in vitamins A, C and E.



ONLY
£2.49

Organic

Alberello Di Sarzana

Stunning green courgettes, mottled with yellow. Fruits grow up to 16cm and have a superb flavour. Productive over a long period.

HHA. 45-60cm (18-24in). Sow: Apr-Jun. Harvest: Jul-Oct. Sun. Kitchen Gardens.

780199 **15 seeds** **£2.49**



Organic

Golden Zucchini

A bushy, early courgette with medium-long fruits that are slender and cylindrical in shape. Very tender-skinned that are bright gold in colour and with distinctive, delicious zucchini flavour.

HHA. 45cm (18in). Sow: Mar-May. Harvest: Jun-Oct. Sun. Kitchen Gardens.

780846 **10 seeds** **£2.99**



Organic

Rondo Di Nizza

A round Italian variety. Pick when up to 10cm in diameter. Strong growing plants. Very prolific and ideal for stuffing.

HHA. 15cm (6in). Sow: May. Harvest: Jul-Oct. Sun. Kitchen Gardens.

780206 **12 seeds** **£2.99**



Harvest all summer long as required!

Black Beauty

Organic

Gives a steady supply of delicious, shiny deep green courgettes throughout the summer months. A strong growing, reliable variety. Easy to pick and ideal for slicing and freezing.

HHA. 45cm (18in). Sow: Apr-Jun. Harvest: Jul-Oct. Sun. Kitchen Gardens, Pots.

780197 **15 seeds** **£2.99**



Organic

Wave Climber

The 'Courgette Wave Climber' is a very productive variety, that will produce crops of dark green luscious fruits reaching 20-25cm in length. Harvesting from July onwards, use this variety like any other courgette! Versatile, tender and very easy to cook - simply slice your courgette to add it to your favourite recipe or grill on a BBQ.

HHA. 1.5-2m (5-6ft). Sow: May. Harvest: Jul-Oct. Sun. Kitchen Gardens.

780896 **10 seeds** **£3.99**

Patty Pan

Crops 12 weeks from sowing.



Organic

Scallopini Yellow

A 'patty pan' squash that is bright yellow in colour. Harvest when 10cm across. Productive over a long period and very tasty.

HHA. 45cm (18in). Sow: May. Harvest: Jun-Oct. Sun. Kitchen Gardens.

780378 **15 seeds** **£2.99**

Cucumber

Crops 12 weeks from sowing. Sow seed singly on edge in 9cm pots under glass at 18-21°C (65-70°F) February-May for greenhouse crops or April-May for outdoors. Later pot on plants into large pots, about 25cm in size, or plant them out in a frame/greenhouse or outdoors. (Do not plant in cold frames until May.)

Greenhouse varieties



Organic

Passandra F1

An 'all female' type 'half' cucumber with good resistance to Powdery Mildew, Mosaic Virus and Downy Mildew. Heavy crops of crisp, delicious, smooth, dark green fruits about 15cm (6") in length. **'Which?' Best Buy variety**

HHA. 3m (10ft). Sow: Feb-May. Harvest: Jun-Sept.

780224 **4 seeds** **£4.49**



Organic

Paska F1

A "greenhouse" type cucumber that you can actually grow outdoors (provided the position is not too exposed). Medium-short fruited (22-25cm). Parthenocarpic means it sets fruit without pollination which means you'll always have a reliable crop. Smooth skinned with slight ribbing. High yielding.

HHA. 1-1.5m (3-5ft). Sow: Feb-May. Harvest: Jul-Sept.

780843 **6 seeds** **£4.99**

For standard greenhouse varieties, remove male flowers leaving the female ones (distinguished by swelling on stem behind petals). For standard outdoor varieties leave on both male and female flowers. 'All female' varieties produce virtually 100% female flowers which means they will not set fruit without insects for pollination.

+ Low in calories & refreshing (96% water).

Greenhouse/outdoor varieties



Dar

A bush type cucumber with vines that only reach 45cm long, perfect for pots or in the open. The fruit is shorter than a regular cucumber, making them a favourite with children and adults alike.

HHA. 45cm (18in). Sow: Feb-May. Harvest: Jul-Sept.

435185 **25 seeds** **£2.99**



Organic

H-19 Little Leaf

Plants are parthenocarpic, meaning self-pollinating with seedless fruit. Small, snack-size cucumbers are great to eat fresh or perfect to pickle. Good to grow in a greenhouse or outside.

HHA. 40-50cm (16-20in). Sow: Feb-May. Harvest: Jul-Oct.

780856 **15 seeds** **£2.99**



Organic

Sonja

Pick the dark green, 25-30cm fruits all summer. Refreshing flavour, with no bitterness. Also for early cultivation under glass.

HHA. 10-40cm (4-16in). Sow: Feb-May. Harvest: Jun-Oct.

780225 **10 seeds** **£1.99**

Excellent Flavour with a crisp texture



Organic

Marketmore

Attractive dark green cylindrical fruit up to 20cm in length. Continuous high yield throughout the season. Resistant to cucumber mosaic virus.

HHA. 3m (10ft). Sow: Feb-May. Harvest: Jul-Sept.

780221 **24 seeds** **£2.99**

Cucamelon



Organic

Cucamelon

Grape-sized cucumbers with a taste of watermelon and a hint of fresh lime! Superb in salads or pickled. Very productive.

HHA. 2.4m (8ft). Sow: Apr-May. Harvest: Jul-Sept. Sun. Greenhouses, Kitchen Gardens.

780892 **20 seeds** **£2.99**

Fennel

Aniseed taste. Use raw or boiled.



Organic

Finale
Firm, heavy, uniform bulbs with flattened shape. Good bolt resistance.
HP. 60cm (24in). Sow: Apr-Jul. Harvest: Sept-Oct. Sun. Kitchen gardens.

780232 170 seeds £2.99



Organic

Romanesco
A "sweet florence" type. Big white bulbs weigh from 500g to 1kg with an aniseed flavour.
HA. 75cm (30in). Sow: May-Jul. Harvest: Jul-Oct. Sun. Kitchen Gardens.

780233 145 seeds £2.99

Kohl Rabi



Organic

Azur Star
Striking blue/purple bulbs. White, mild flavoured flesh. Quick growing. Leaves can be cut and steamed like cabbage. This is very quick maturing and can be sown outside from spring to mid-summer, or in the greenhouse for early/late crops.
HA. 35cm (14in). Sow: Apr-Jul. Harvest: Jun-Oct. Sun. Kitchen Gardens.

780307 72 seeds £2.99

Kale

Crops 30-35 weeks from sowing. A delicious autumn, winter, spring vegetable.



Organic

Nero Di Toscana
The fully grown plants have attractive dark green, deeply savoyed, strap-like leaves. Excellent winter hardiness makes kale a useful winter to spring vegetable at a time when fresh garden produce is scarce.
HA. 90cm (35in). Sow: Mar-May. Harvest: Sept-Feb. Sun/Part Shade. Kitchen Garden.

780300 125 seeds £2.99



Organic

Redbor FI
Excellent winter hardiness makes kale the ideal winter to spring vegetable, it will never disappoint. A colourful addition to the vegetable or ornamental garden. Delicious purplish-red curled leaves.
HA. 90cm (35in). Sow: Mar-May. Harvest: Sept-Feb. Sun/Part Shade. Kitchen Garden.

780881 30 seeds £3.49



Organic

Dwarf Green Curled
This popular, compact curly Kale is ideal for growing in windswept gardens or on poor soils. Attractive, dark, tightly frilled leaves of excellent quality.
HA. 40cm (16in). Sow: Mar-May. Harvest: Jan-Apr. Sun/Part Shade. Kitchen Garden.

780299 190 seeds £2.99

Leeks

Crops 30-45 weeks from sowing. A versatile vegetable which may be taken young as tasty salad leeks or matured to the traditional autumn vegetable.
✂ Traditional for soups and stews whose slices are also ideal for stir-fries.

Late Winter/Spring Harvest



Organic

Atlanta
Very good frost tolerance and resistance to bolting. Dark green foliage and straight shanks 18-24cm long.
HB. 20cm (8in). Sow: Mar-Apr. Harvest: Dec-Apr. Sun/Part Shade. Kitchen Gardens.

780686 145 seeds £3.99



Organic

Bandit
A blue-green winter variety. Performs well in bad and cold weather. Tasty, medium long white stems.
HB. Sow: Apr. Harvest: Nov-Dec. Sun/Part Shade. Kitchen Gardens.

780330 190 seeds £3.49

Late Summer/Autumn Harvest



Organic

Hannibal
An early autumn variety with dark green leaves and a long thick, white shank.
HB. 30cm (12in). Sow: Feb-Apr. Harvest: Jul-Oct. Sun/Part Shade. Kitchen Gardens.

780333 215 seeds £2.99

Herbs are an essential part of any garden, they give flavour to our food and have health giving properties. Many flowering herbs attract bees and other pollinators and can even deter pests from attacking your crops.



Organic

ONLY £2.39

Best seller!

Basil Genovese
Essential for authentic Italian cuisine, this sweet basil is one of the most popular varieties, with a strong scent and distinctive fresh flavour.
HHA. 45cm (18in). Sow: Feb-Jun. Harvest: Jun-Oct. Sun. Kitchen Gardens, Pots.

780241 320 seeds £2.39



ONLY £2.39

Organic

Cilantro
Broadcast thinly and cut when 15cm high. May be cut several times. Best sown in spring and early summer.
HA. 50cm (20in). Sow: Jan-Dec. Harvest: Jan-Dec. Sun. Kitchen Gardens.

780255 120 seeds £2.39



Organic

Slobolt
Specially bred to be able to be cut multiple times without the plant going to seed, meaning you aren't constantly having to sow more seed like you would when growing regular coriander.
HA. 40cm (16in). Sow: Apr-Jun. Harvest: May-Oct. Sun. Kitchen Gardens, Pots.

780894 25 seeds £2.99



ONLY £2.39

Organic

Italian Giant
Vigorous aromatic plant with large bright green leaves which are bigger than the French type.
HB. 30cm (12in). Sow: Mar-Apr. Harvest: Jul-Sept. Sun/Part Shade. Kitchen Gardens, Pots.

780421 285 seeds £2.39



Organic

Moss Curled 2
Tall-growing, strong parsley. Mid-green foliage with an attractive curl. An improved selection of the standard moss curled variety, it's very easy to grow and tolerates a light frost.
HB. 30cm (15in). Sow: Feb-Jul. Harvest: Jan-Nov. Sun/Part Shade. Kitchen Garden, Pots.

780420 285 seeds £2.39



Organic

Plain French
Has a stronger and more pungent flavour than curled parsley. It produces dark green, sturdy plants with a great deal of leaf.
HB. 30cm (12in). Sow: Mar-Apr. Harvest: Jul-Sept. Sun/Part Shade. Kitchen Gardens, Pots.

780423 285 seeds £2.39



An iconic woodland plant

Organic

Wild Garlic
An iconic garlic variety that anybody who enjoys long walks in the countryside will recognise instantly.
HbB. 40cm (16in). Harvest: Jul-Aug. Sun/Part Shade. Kitchen Gardens.

780899 25 seeds £2.99



ONLY £2.39

Organic

Root Chervil
Produces tubers the same size as a small new potato. Tubers taste like sweet parsnip, parsley and chestnut. Ideal to roast with the skin on (as this adds to the flavour). After harvest, store for a few weeks to increase the sweetness of the tubers, this is when the starch is converted to sugar.
HB. 2m (6.5ft). Sow: Mar & Sep-Oct. Harvest: Sept-Dec. Sun/Part Shade. Kitchen Gardens.

780880 100 seeds £2.39



NEW

Organic

Sorrel Bloody Dock
A stunning perennial herb with dark green leaves and brilliant red veining. Add fresh, apple-citrus flavour to salads, fish dishes, soups, and stews. Grow it as an annual for vibrant foliage in borders, herb gardens, or veggie plots.
HP. 60cm (24in). Sow: Mar-May. Harvest: May-Nov. Sun. Kitchen Garden, Pots.

780262 200 seeds £2.99

Lettuce

Crops 10-14 weeks from sowing. Source of beta-carotene/vitamin A - especially darker green leaves.



Organic

Mixed

A mix of Red Salad Bowl, Suzan, Marvel of Four Seasons and Little Leprechaun all in one packet. Cut at 10cm high for baby leaf or allow to fully grow. HHA. 20cm (8in). Sow: Mar-Aug. Harvest: May-Oct. Sun/Part Shade. Kitchen Gardens, Greenhouses.

780353 335 seeds £2.99

Loose Leaf 'Picking' Lettuce and Baby Leaf



ONLY £2.39

Organic

Salad Bowl Red

This fabulous loose-leaf lettuce produces attractive red-bronze leaves with delicate crimped edges. HHA. 15cm (6in). Sow: Mar-Jul. Harvest: Jun-Oct. Sun/Part Shade. Greenhouses, Kitchen Gardens.

780684 425 seeds £2.39



Organic

Salad Bowl Green

A favourite garden variety for many years. Attractive green foliage with curly edges. Two sowings will usually cover a whole season. HHA. 15cm (6in). Sow: Mar-Jul. Harvest: Jun-Oct. Sun/Part Shade. Greenhouses, Kitchen Gardens.

780363 425 seeds £2.39

Batavia Lettuce



Organic

Leny

A real 'all year round' lettuce for growing outside from spring to early autumn, or under glass from autumn to spring.

HHA. 20cm (8in). Sow: Mar-Oct. Harvest: Jan-Dec. Sun. Kitchen Gardens, Greenhouses.

700017 120 seeds £3.99

Summer 'Cos' Lettuce



Organic

Little Gem

A quick maturing semi-cos lettuce. The crisp leaves have a delicious sweet flavour. Small compact plants which are packed with a crisp, sweet heart. **'Which?' Best Buy variety**

HHA. 20cm (8in). Sow: Mar-Aug. Harvest: Jun-Oct. Sun/Part Shade. Greenhouses, Kitchen Gardens, Pots.

780347 440 seeds £2.39



Speckled Trout

An old Austrian Heritage variety of Cos lettuce. This lettuce is very cold hardy and slow to bolt so can be cropped for longer.

HHA. 30cm (12in). Sow: Mar-Sept. Harvest: Apr-Oct. Sun/Part Shade. Kitchen Gardens, Greenhouses.

439536 150 seeds £2.99

Salad Leaf varieties



Leaf Salad Spicy Mix

For salads with a spicy twist, choose this mix of Rocket, Red Giant Mustard, Green Wave Mustard and Mizuna Kyoto. Ready to eat in just 3 weeks.

HHA. 15cm (6in). Sow: Mar-Oct. Harvest: Apr-Nov. Sun/Part Shade. Kitchen Gardens, Pots.

436563 850 seeds £2.99



NEW

Organic

Mizuna Red & Green Mix

Great for adding flavour and colour to salads, stir fries and sandwiches, this mildly spicy Mizuna Red & Green Mix is so easy and rewarding to grow.

HHA. 30cm (12in). Sow: Jan-Dec. Harvest: Jan-Dec. Sun. Kitchen Gardens, Pots.

780356 500 seeds £2.99



ONLY £2.39

Organic

Mustard Giant Red

The colour intensifies in cold weather. Use young leaves in salads, cook mature leaves like spinach. Sow in spring or late summer.

HHA. 12-15cm (5-6in). Sow: Jan-Dec. Harvest: May-Jul/Nov-Jan. Sun. Kitchen Gardens.

780386 475 seeds £2.39

Parsnip

Contains vitamin C and potassium which is a good source of energy.



Organic

Tender And True

With superb flavour and large roots, this variety is ideal for both the kitchen and the show bench. The long tapering roots have good canker resistance.

HA. 45cm (18in). Sow: Apr-May. Harvest: Sept-Feb. Sun/Part Shade. Kitchen Gardens.

780426 400 seeds £2.99



Organic

Halbange

Long, bright white, uniform 25cm roots with a consistent shape, good for the garden and the show bench.

HA. 45cm (18in). Sow: Feb-May. Harvest: Sept-Mar. Sun/Part Shade. Kitchen Gardens.

780858 340 seeds £2.99

Pea

+ A good source of vitamins and folic acid. Mangetout types are a good source of vitamins A & C as the pod is eaten.

✂ Eat raw or steam gently to retain nutrient values. As soon as pods are harvested, sugars begin conversion to starch, so eat soon after picking.

Spring Sowing

Usually ready 11-16 weeks from sowing.



Hurst Greenshaft

Medium green pointed pods in pairs, each containing 9-11 peas. Resistant to downy mildew and Fusarium Wilt; recommended for exhibition.

'Which?' Best Buy variety

HA. 75cm (30in). Sow: Mar-Jun. Harvest: Jun-Sept. Sun. Kitchen Gardens.

430238 400 seeds £3.49



Organic

Kelvedon Wonder

Thin-shelled pointed, narrow pods in pairs. Heavy yielding, and of fine flavour, it is also resistant to mildew and suitable for June sowing.

HA. 45cm (18in). Sow: Mar-Jul. Harvest: Jun-Sept. Sun. Kitchen Gardens.

780440 200 seeds £2.99



Organic

Ambassador

Produces handfuls of blunt-ended pods, each containing up to 9 luscious green peas. Fresh or frozen, this 'Onward' type pea is high in vitamin C and tastes delicious! **'Which?' Best Buy variety**

HA. 80cm (31in). Sow: May-Jun. Harvest: Jun-Oct. Sun. Kitchen Garden.

780429 200 seeds £3.49

Mangetout

✂ No shelling required - just cook them whole!



Organic

Sugar Norli

Small deep green pods with delicious flavour, best picked when 5cm long. The true French green mangetout.

HA. 50cm (20in). Sow: Mar-Jun. Harvest: Jul-Sept. Sun. Kitchen Gardens.

780451 200 seeds £2.99

Spring Onion



ONLY £2.39

Organic

White Lisbon

Sow in September for use in the following spring. Very hardy. RHS Award of Garden Merit winner. **'Which?' Best Buy variety**

HA. 30cm (12in). Sow: Mar-May, Aug-Sept. Harvest: Apr-Oct. Sun. Kitchen Gardens, Pots.

780408 400 seeds £2.39



Organic

Parade

This non-bulbing, Japanese type 'bunching onion' is a vigorous variety producing long, juicy white shafts topped with strong green foliage.

HA. 30cm (12in). Sow: Mar-Jul. Harvest: Jun-Oct. Sun. Kitchen Gardens, Pots.

700016 200 seeds £2.49

Pepper (Capsicum)

Sow under glass, like tomatoes, and grow on in pots in a cool greenhouse or tunnel. Crops in 18-20 weeks

+ Red and green peppers are high in vitamin C and the red very high in vitamin A.

Sweet Pepper



Snackbite

You'll love these snack-sized sweet peppers. The compact fruits contain few seeds. Ideal as a patio plant. Produces approximately 25-30 fruits in two flushes. HHA. 50-60cm (20-24in). Sow: Feb-Apr. Harvest: Jul-Oct. Sun. Kitchen Garden, Pots.

433630 **6 seeds** **£3.79**

Chilli Pepper

To check the piquancy of your chilli crops, take a look at their rating (measured in Scoville heat units - SHU)



30,000
-50,000
SHU

De Cayenne

A chilli lovers dream, this versatile variety is used for making many different products from the famously hot Cayenne chilli powder to chilli oil.

HHA. 45-60cm (18-24in). Sow: Feb-Mar. Harvest: Jul-Oct. Sun. Kitchens, Greenhouses.

780895 **15 seeds** **£3.49**



2,500
-5,000
SHU

Early Jalapeno

Mild heat. Early maturing and very productive. Indispensable in Mexican cooking.

HHA. Sow: Feb-Apr. Harvest: Jul-Oct. Sun. Kitchens, Greenhouses, Pots.

780459 **32 seeds** **£2.99**

Squash

High in vitamins A, C and E. Can be used just like a potato, even baked in foil like a jacket potato.



Butternut

Creamy flesh, with a strong, pleasant taste. Ideal for making soup: simply puree the cooked flesh in a mixer and add tomato sauce, butter and salt. Stores well.

HHA. 45cm (18in). Sow: Apr-May. Harvest: Aug-Oct. Sun. Kitchen Gardens.

780531 **10 seeds** **£2.99**



Honeyboat

This wonderful heritage variety tastes just like a sweet potato but is easier to grow! Superb baked in the oven, and no need to peel as even the skin can be eaten. Attractive green stripes fade to orange as fruit matures, giving a clear indication of which to eat first. Can be stored for months!

HHA. 45cm (18in). Sow: Apr-Jun. Harvest: Aug-Oct. Sun/Part Shade. Kitchen Garden.

438709 **6 seeds** **£3.49**



Amoro F1

Beautiful, dark orange, heart-shaped fruit, hence the name 'Amoro' with F1 vigour and very productive. Compact bushy plants, perfect for small spaces or containers.

HHA. 60cm (24in). Sow: May. Harvest: Sept-Oct. Sun. Kitchen Gardens.

780885 **8 seeds** **£3.99**

Pumpkin

Excellent antioxidant properties and a good source of vitamins A, B1, C, E and beta carotene. Pumpkin seeds are also highly nutritious.



Potimarron

Chestnut flavour, rich in vitamins and minerals. The aroma and flavour increases when stored. Weighs up to 1.5kg.

HHA. 60cm (24in). Sow: Apr-Jun. Harvest: May-Jun. Sun. Kitchen Gardens.

780549 **10 seeds** **£2.99**



Marina Di Chioggia

Medium sized flat fruits with knobbly skin and superb flavoured yellow-orange flesh. Stores well, the flavour improving with age.

HHA. 60cm (24in). Sow: Mar-May. Harvest: Aug-Oct. Sun. Kitchen Gardens.

780545 **15 seeds** **£3.99**

Radish

High in potassium and vitamin C.



ONLY
£2.39

French Breakfast

Elongated, rosy-scarlet with a white tip. The crunchy flesh has a pleasant flavour. Good value for slicing.

HA. 15cm (6in). Sow: Mar-Sept. Harvest: Apr-Oct. Sun/Part Shade. Kitchen Gardens, Pots.

780482 **380 seeds** **£2.39**



Scarlet Globe

Bright red, evenly shaped roots with pure white, crisp, moist flesh and mild flavour. Radish 'Scarlet Globe' is a very popular and easy variety.

HA. 15cm (6in). Sow: Feb-Aug. Harvest: Apr-Oct. Sun/Part Shade. Kitchen Gardens, Pots.

780489 **475 seeds** **£2.99**



Sora

These high-quality roots maintain their crispness and resist pithiness even when oversized or in warm weather. Peppery and perfect for salads, they are fast cropping and easy to grow. Also ideal to grow between other veg.

HA. 30cm (12in). Sow: Mar-Aug. Harvest: Apr-Oct. Sun/Part Shade. Kitchen Gardens, Pots.

780884 **300 seeds** **£2.99**

Spinach

High in beta-carotene, lutein, and dietary fibre. High in vitamins A & C.



ONLY
£2.39

Best seller!

Perpetual

Reliable and dependable. Its main advantage is that it won't bolt so quickly, so you can leave plants to stand in the ground for much longer.

HB. 50cm (20in). Sow: Mar-Apr. Harvest: May-Feb. Sun/Part Shade. Kitchen Garden.

780508 **165 seeds** **£2.39**

Rocket

Crops just 3-4 weeks from sowing. Harvest leaves all summer as required as 'cut and come again'.



ONLY
£2.39

Salad Rucola

A rich, spicy flavour. Crops just 3-4 weeks from sowing. Sow this popular salad from April to June outdoors. Harvest leaves all summer as 'cut and come again' salad as required. May run to seed more quickly in summer.

Also grows well in a cold greenhouse over winter. HA. 15cm (6in). Sow: Apr-Sept. Harvest: Jun-Nov. Sun/Part Shade. Greenhouses, Kitchen Gardens, Pots.

780494 **380 seeds** **£2.39**



Wild Rocket

Deep green, serrated foliage that makes an attractive garnish. Wild Rocket has a stronger flavour than standard Rocket, and the young leaves can be picked in succession and are perfect for salads.

HP. 15-20cm (6-8in). Sow: Apr-Oct. Harvest: Jun-Nov. Sun/Part Shade. Greenhouses, Kitchen Gardens, Pots.

780496 **400 seeds** **£2.49**

Sweetcorn

Rich in carbohydrates and sugars and contains useful amounts of vitamins A, B3 and C. It also contains folic acid, fibre and protein. A gluten-free cereal. Delicious cooked and eaten straight off the cob.



Damaun

From recent European breeding of open-pollinated sweet corn. Excellent quality, stocky, juicy cobs remain sweet after harvest.

HHA. Sow: May. Harvest: Aug-Oct. Sun. Kitchen Gardens.

780574 **30 seeds** **£2.99**



Golden Bantam

This sweetcorn is an open-pollinated classic. Slender 18cm cobs, with broad golden kernels. Retains sweetness well. Sturdy plants.

HHA. Sow: Mar-May. Harvest: Aug-Oct. Sun. Kitchen Gardens.

780570 **48 seeds** **£2.99**



Medzi

A new open pollinated, extra sweet variety. The high natural sugar content is slow to convert into starch, improving both texture and flavour.

HHA. Sow: May. Harvest: Sept-Oct. Sun. Kitchen Gardens.

780573 **48 seeds** **£2.99**

Tomato

- + Packed with antioxidants including vitamins A & C and lycopene.
- ✂ Try slow roasting for 1½-2 hours in olive oil with sea salt and black pepper.

Medium-Fruited Varieties

Ideal for summer salads! Best grown indoors.



Best seller!

Tomato MoneyMaker Organic

Harvesting from July through to September you will be lucky enough to enjoy this scrumptious fruit throughout the summer. This cordon variety is perfect for containers or planters in the greenhouse or on the patio.

HHA, 2m (6.5ft). Sow: Mar-Apr. Harvest: Jul-Sept. Sun. Greenhouse, Kitchen Garden.

780608 **10 seeds** **£3.49**

Reliable harvest!



BLIGHT RESISTANT
Grow with confidence

Tomato Crimson Crush F1

With its ability to shrug off even the worst blight, Crimson Crush will provide great yields of exceptionally fine tasting, large, round tomatoes (each weighing up to 200g). **'Which?' Best Buy variety**

HHA, 2m (6.5ft). Sow: Mar-Apr. Harvest: Jul-Oct. Sun. Indoors, Greenhouses, Kitchen Garden, Pots.

439360 **15 seeds** **£4.99**



Organic

Tomato Diplom F1

Superb garden variety with old fashioned flavour. Early maturing and productive over a long period. 80-100g fruits.

HHA, 1.8m (6ft). Sow: Feb-Apr. Harvest: Jul-Sept. Sun. Kitchen Gardens.

780593 **20 seeds** **£3.99**

Small-Fruited Varieties for greenhouse or outdoors



Organic

Tomato Yellow Pear

Pear-shaped fruits. Mild, low acid, sweet flavour. Produces clusters of fruit all summer. Excellent pickling and preserving.

HHA, 1.8-3.5m (6-12ft). Sow: Feb-Apr. Harvest: Jul-Sept. Sun. Kitchen Gardens.

780627 **15 seeds** **£2.99**



ONLY £2.39

Tomato Zuckertraube

Extremely vigorous producing loads of small, sweet, grape-sized tomatoes.

HHA, 1.8m (6ft). Sow: Feb-Apr. Harvest: Jul-Sept. Sun. Kitchen Gardens.

780629 **30 seeds** **£2.99**



Organic

Tomato Tigerella

Completely greenback free, Tomato 'Tigerella' crops heavily and over three weeks earlier than 'Moneymaker'. The rich, tangy fruits have a unique flavour to complement the eye appeal of those clearly defined red and yellow stripes!

HHA, 2m (6.5ft). Sow: Feb-Apr. Harvest: Jul-Oct. Sun. Greenhouses, Kitchen Gardens.

780624 **30 seeds** **£2.99**

Small-Fruited Varieties for outdoor basket or container growing



Organic

Tomato Koralik

This early-cropping bush variety, organic Tomato 'Koralik' has a well-branched habit and provides a fantastic summer harvest large cherry tomatoes which are simply bursting with flavour.

HHA, 45cm (18in). Sow: Feb-Apr. Harvest: Jul-Oct. Sun. Greenhouses, Kitchen Gardens.

780602 **20 seeds** **£2.99**



Tomato Red Alert

You can expect weights of 4-5lb (1.8-2.25kg) of delicious tomatoes per bush from this compact, heavy yielding outdoor tomato.

HHA, 45cm (18in). Sow: Feb-Apr. Harvest: Jul-Oct. Sun. Greenhouses, Kitchen Gardens.

439265 **35 seeds** **£3.49**

Large-Fruited Varieties

For sandwiches, frying or grilling. For best results, grow indoors.



Organic

Tomato Marmande

Continental outdoor variety. Large, irregular fruits with firm flesh and few seeds.

HHA, 1.8m (6ft). Sow: Feb-Apr. Harvest: Jul-Sept. Sun. Greenhouse, Indoors, Kitchen Garden, Pots.

780605 **30 seeds** **£2.99**



Organic

Tomato Country Taste F1

These massive bright red tomatoes can reach up to 400 grams each. Wonderful flavour sliced in sandwiches or fried.

HHA, 2m (6.5ft). Sow: Feb-Mar. Harvest: Jul-Oct. Sun. Greenhouses, Kitchen Gardens, Pots.

780592 **15 seeds** **£3.99**



Organic

Tomato Bolstar Granda

Vigorous variety suitable for unheated greenhouses. Produces tasty, 100g tomatoes around 9 per truss, borne on strong plants.

HHA, 2-2.5m (6.5-8ft). Sow: Feb-Apr. Harvest: Jul-Sept. Sun. Kitchen Gardens.

780587 **15 seeds** **£3.99**



BLIGHT RESISTANT
Grow with confidence

Tomato Crimson Blush F1 (Rose Crush)

The F1 Crimson Blush is big, bold, beautiful, and blight-resistant. The best tolerance to late blight disease we have ever seen.

HHA, 2m (6.5ft). Sow: Feb-Apr. Harvest: Jul-Oct. Sun. Indoors, Greenhouses, Kitchen Garden, Pots.

439001 **10 seeds** **£4.69**

Green Manure

When green manure plants are dug back in, they decompose releasing their nutrients into the soil.

N FIXER These absorb nitrogen from the air.

N LIFTER These absorb surplus soil nutrients so they are not washed away by rain.

Allow time before sowing seeds after a green manure

As green manures decay in the soil they release compounds that inhibit germination of small seeds. This particularly applies to overwintered plants, e.g. rye, tares, and clover. Avoid problems by following green manures with a transplanted crop, sets or tubers. Do not sow seeds until at least 4 weeks after digging in the green manure.



Organic

Hungarian Grazing Rye

One of the best green manures for winter use. Great for storing nutrients, improving soil structure and suppressing weeds. Continues to grow in cold weather. A good cover crop to prevent nutrient leaching. Dig in during the spring.

HA, 30cm (12in). Sow: Aug-Oct. Flowers: May-Jun. Sun/Part Shade. Kitchen Gardens.

781173 **112 gram** **£2.99**



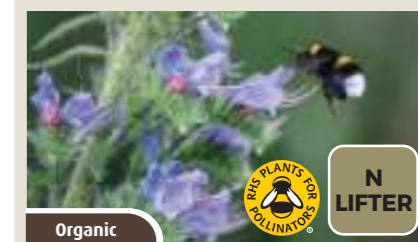
Organic

Crimson Clover

A vigorous quick growing clover with wonderful red flowers which bees love.

HP, 45cm (18in). Sow: Mar-Aug. Flowers: Jun-Aug. Sun/Part Shade. Kitchen Gardens.

781162 **112g 35m²** **£4.99**



Organic

Phacelia Tanacetifolia

A bushy plant with bright blue flowers which bees love. Gives good ground cover and establishes quickly. Dig in at or before flowering to prevent self-seeding. The flowers are an excellent attractant to beneficial insects and bees.

HA, 1.2m (4ft). Sow: Mar-Aug. Flowers: Jun-Aug. Sun. Kitchen Gardens.

781183 **100g 45m²** **£4.99**

Organic varieties are grown to Organic standards, other varieties are untreated after harvest. All potatoes listed are produced without using peat. All seed potatoes comply with UK quality and disease control regulations. Please unpack and inspect on receipt and put to sprout in a light, cool, well-ventilated place, free from frost. Bags contain stated weight when packed. 1kg gives 11-15 tubers which, if spaced 70cm between rows and 30cm between tubers, will plant about 3m². Plant closer for a crop of smaller potatoes.

First early

Varieties are quick growing, cropping in around 10 weeks. Not recommended for storage. A good choice to avoid potato late blight.



B S
Arran Pilot A traditional favourite producing white fleshed tubers of firm waxy texture and a pleasing flavour. Potato 'Arran Pilot' also shows good resistance to scab.
 TT. 60cm (24in). Harvest: May-Jun. Sun. Kitchen Gardens, Pots. Del: Mar-Apr.

72298	1kg	£7.99
KF0701	2kg	£9.99
KF0702	5kg	£21.99



Organic
B M R S
Maris Peer
 The firm creamy yellow fleshed tubers of Potato 'Maris Peer' retain their colour and have a superb flavour, but won't disintegrate on cooking. This outstanding second early variety also boasts the most attractive, slightly scented purple flowers.
 TT. 60cm (24in). Harvest: Jul-Aug. Sun. Kitchen Garden, Pots. Del: Feb-Apr.

KC2228	1kg organic	£7.99
--------	-------------	-------

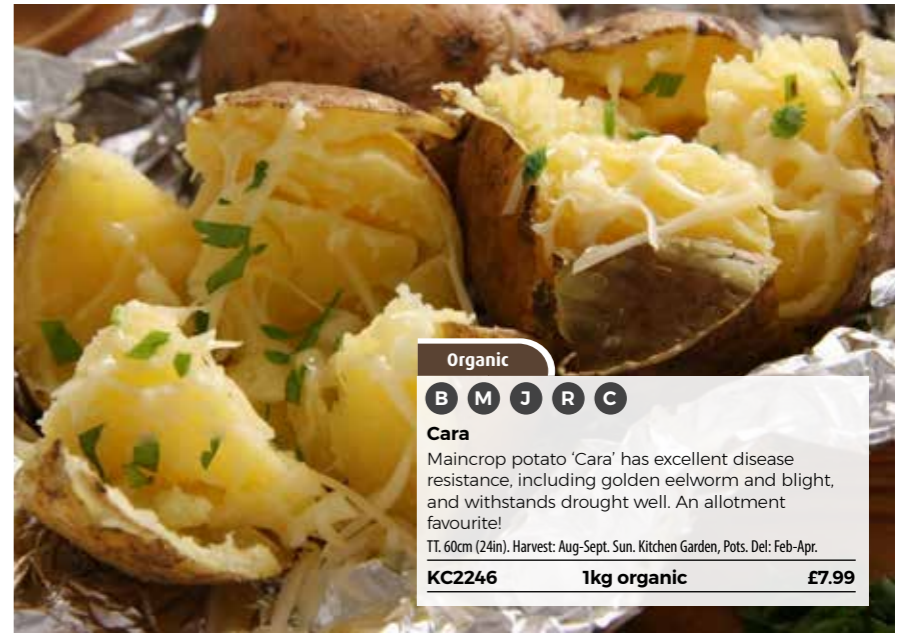
Second early

Varieties can be eaten young as new potatoes or left to grow bigger, and lifted as required for fresh summer use, or storage.



Organic
J R C
Setanta
 Potato 'Setanta' has a characteristically high dry matter - perfect for roasting, baking and chipping! This late maincrop variety triumphed over other varieties in our own taste tests. An ideal choice for the organic home gardener.
 TT. 60cm (24in). Harvest: Aug-Sept. Sun. Kitchen Garden. Del: Feb-Apr.

KC2218	1kg organic	£7.99
--------	-------------	-------



Organic
B M J R C
Cara
 Maincrop potato 'Cara' has excellent disease resistance, including golden eelworm and blight, and withstands drought well. An allotment favourite!
 TT. 60cm (24in). Harvest: Aug-Sept. Sun. Kitchen Garden, Pots. Del: Feb-Apr.

KC2246	1kg organic	£7.99
--------	-------------	-------

B M R S
Charlotte
 A very popular second early, salad variety producing pear shaped, yellow skinned, waxy tubers and creamy yellow flesh of first class flavour, eaten either hot or cold. **'Which?' Best Buy variety**
 TT. 60cm (24in). Harvest: Jul-Aug. Sun. Kitchen Garden, Greenhouse, Pots. Del: Feb-Apr.

KC2244	1kg organic	£7.99
--------	-------------	-------



C S
Maris Bard White skinned tubers with white flesh and a traditional new potato taste. A very early, heavy cropping variety with good disease resistance.
 TT. 60cm (24in). Harvest: May-Jun. Sun. Kitchen Gardens, Pots. Del: Feb-Apr.

72306	1kg	£8.99
KB3840	2kg	£11.99
KC2281	4kg	£16.99



B M R C S
Kestrel Tubers of consistent size and shape, with attractive, smooth skins and violet eyes. Good slug resistance. Golden eelworm and partial white eelworm resistance. **'Which?' Best Buy variety**
 TT. 60cm (24in). Harvest: Jul-Aug. Sun. Kitchen Garden, Pots. Del: Mar-Apr.

72320	1kg	£8.99
KB6912	2kg	£9.99
KC2192	4kg	£17.99



B S
Pink Fir Apple A very old variety dating back to 1850. This late maincrop variety produces long, knobby, pink skinned tubers with butter yellow, waxy flesh, and a distinctive nutty flavour.
 TT. 60cm (24in). Harvest: Aug-Oct. Sun. Kitchen Garden, Pots. Del: Mar-Apr.

72290	1kg	£8.99
KB6907	2kg	£11.99
KC2194	4kg	£19.99



B M J R C
King Edward An enduringly popular heritage variety, and a firm favourite for roasting. The creamy skin is characteristically blushed with pink whilst the creamy white flesh has a light, floury texture.
 TT. 60cm (24in). Harvest: Jul-Sept. Sun. Kitchen Garden, Pots. Del: Mar-Apr.

72330	1kg	£8.99
KB6915	2kg	£9.99
KC2193	4kg	£14.99



B M J R
Java The new improved version of Sarpo Mira. A red skinned maincrop with excellent blight resistance. Plentiful crops with good eating qualities making it an excellent choice for gardeners.
 TT. 30cm (12in). Harvest: Aug-Sept. Sun. Kitchen Gardens. Del: Feb-Apr.

KF5770	1kg	£8.99
KF5771	2kg	£11.99
KF5772	4kg	£17.99



C S M
Colleen
 Potato 'Colleen' has short oval tubers with white flesh and is an excellent all round potato with high resistance to blight. The tuber has medium dry matter making it suitable for everything from salads to mash.
 TT. 60cm (24in). Harvest: Jun-Jul. Sun. Kitchen Garden. Del: Feb-Apr.

KC2242	1kg organic	£7.99
--------	-------------	-------



B M R S
Red Duke Of York
 Large, oval, red-skinned tubers with moist yellow flesh of superb flavour. Potato 'Red Duke of York' is a good all rounder and really excellent for roasting.
 TT. 60cm (24in). Harvest: May-Jun. Sun. Kitchen Garden, Pots. Del: Feb-Apr.

72310	1kg	£8.99
KA9751	2kg	£9.99
KC2196	4kg	£16.99



B M J R C S
Vivaldi
 Mouth watering and creamy whether boiled, baked, mashed or roasted. Versatile Potato 'Vivaldi' is excellent for producing high yields of 'baby potatoes' or for larger tubers as a second early/early maincrop.
 TT. 60cm (24in). Harvest: Jul-Aug. Sun. Kitchen Garden, Pots. Del: Mar-Apr.

81182	1kg	£8.99
KA8411	2kg	£11.99



B M J R C
Desiree This well-loved maincrop potato has particularly good drought resistance. Potato 'Desiree' is versatile for all cooking purposes including roasting and baking.
 TT. 60cm (24in). Harvest: Jul-Sept. Sun. Kitchen Garden, Pots. Del: Mar-Apr.

72326	1kg	£8.99
KB6914	2kg	£9.99
KF0697	5kg	£19.99



B M J R C
Maris Piper The best chipping variety available, and a versatile 'all rounder'. Potato 'Maris Piper' produces dry, floury tubers with creamy-white flesh of good flavour, that rarely discolours on cooking.
 TT. 60cm (24in). Harvest: Jul-Sept. Sun. Kitchen Garden, Pots. Del: Mar-Apr.

72332	1kg	£8.99
KB6916	2kg	£9.99
KF0699	5kg	£19.99



B M J R C
Rooster
 An excellent all rounder, producing oval tubers with pale yellow, dry, floury flesh that is incredibly versatile for boiling, baking, chipping, and roasting.
 TT. 60cm (24in). Harvest: Jul-Sept. Sun. Kitchen Garden, Pots. Del: Mar-Apr.

81174	1kg	£8.99
KB6935	2kg	£11.99

Vegetable Plants A-Z

We are pleased to offer a wide range of organically grown veg plants, which are ideal if you don't wish to grow plants from seed. All veg plants are peat free, (except sweet potatoes) organically grown. plus our Yorkshire nursery now runs on a biomass boiler and uses state-of-the-art LED lighting (when needed), reducing our emissions.

Look out for the **NEW** varieties we have to offer this year!



Organically grown in the UK

Asparagus



Gijnlim



Backlim



Guelph Millenium



Mondeo

This versatile variety has created huge interest due to its impressive yields and quality, especially early in the season.

HP: 1.5m (4.5ft). Harvest: Apr-Jun. Sun. Kitchen Gardens. Del: Apr-May.

15058	5 crowns	£11.99
15059	10 crowns	£14.99
15060	25 crowns	£34.99



BUY 25
SAVE
£24.96

Pacific Purple

High yielding asparagus will produce white spears if earthed up, the purple colour can be lost when cooked so they are best steamed or eaten raw.

HP: 1.5m (4.5ft). Harvest: Apr-Jun. Sun. Kitchen Gardens. Del: Apr-May.

KC2200	5 crowns	£11.99
KC2201	10 crowns	£14.99
KC2202	25 crowns	£34.99

Continuity Collection

Our Asparagus Continuity Collection includes three varieties of asparagus which cover the whole asparagus cropping season. Asparagus is a low maintenance but high value crop which continues producing for years.

HP: 1.5m (59in). Harvest: Apr-Jun. Sun. Kitchen Garden. Del: Apr-May.

Backlim

KC2289	5 crowns	£11.99
KC2290	10 crowns	£16.99
KC2291	25 crowns	£36.99

Guelph Millenium

KC2199	5 crowns	£11.99
KB6885	10 crowns	£16.99
KB6886	25 crowns	£36.99

Gijnlim

KB2058	5 crowns	£11.99
KB2059	10 crowns	£16.99
KB2060	25 crowns	£39.99

Asparagus Continuity Collection

KC2298	30 crowns	£39.99
--------	-----------	--------



BUY 6
SAVE
£5.99

Artichoke Twin Pack

Globe Artichokes are grown for their tasty, rounded flower heads which are harvested before they bloom. Find them a permanent position in flower borders or the kitchen garden, where they will return bigger and better each year.

HP: 1.8m (6ft). Harvest: Jul-Sept. Sun. Borders, Kitchen Gardens. Del: Apr-May.

Green Globe

KC3111	3 jumbo plugs	£12.99
--------	---------------	--------

Purple Globe

KC3114	3 jumbo plugs	£12.99
--------	---------------	--------

Artichoke Twin Pack

KC3112	6 jumbo plugs	£19.99
--------	---------------	--------



Celeriac Brilliant

Celeriac is delicious vegetable that deserves greater popularity. This versatile vegetable can be enjoyed roasted or mashed, or added to soups and stews for a rich and tangy Celery flavour. Produces smooth roots with white flesh that won't discolour.

HA: 40cm (16in). Harvest: Oct-Nov. Sun. Kitchen Garden. Del: May-Jun.

KC7931	18 Postiplants	£9.99
--------	----------------	-------



Celery Tango F1

A self-blanching celery producing beautiful, smooth apple-green stems with good flavour. Stands well during hot weather for a reliable crop.

HP: 45cm (18in). Harvest: Aug-Oct. Sun. Kitchen Garden. Del: Apr-May.

KC3132	18 Postiplants	£9.99
--------	----------------	-------



Leek Autumn Mixed

Harvest delicious leeks from September through to the winter. Great variety of leeks for successional harvest making a tasty alternative to add to your favourite seasonal recipes.

HHA: 45cm (18in). Harvest: Sept. Sun. Kitchen Garden. Del: Apr-May.

KF7865	20 Postiplants	£9.99
--------	----------------	-------



Comfrey

Bocking 14 This quick growing plant can be cut 3 or 4 times throughout the growing season.

HP: 1m (39in). Flowers: May-Aug. Harvest: Jun-Sept. Sun/Part Shade. Kitchen Gardens. Del: Apr-May.

KC8530	5 bare roots	£11.99
KC8531	10 bare roots	£17.99
KC8532	20 bare roots	£22.99



Lettuce All Sorts Mixed

If you've never grown your own lettuce plants, try our mixed pack: five superb varieties to provide a range of colours, tastes and leaf types.

HA: 15cm (6in). Harvest: Jan-Dec. Sun/Part Shade. Kitchen Garden. Del: Apr-May.

KF7872	20 Postiplants	£9.99
--------	----------------	-------



Sweet Potato Beauregard

Phenomenally popular as it is similar to the tubers on supermarket shelves. **'Which?' Best Buy variety**

TT: 3m (9ft). Harvest: Sept-Oct. Sun. Kitchen Garden, Pots, Greenhouses. Del: Apr-May.

KC7467	6 jumbo plugs	£12.99
KC5993	12 jumbo plugs	£19.99

Sweetcorn



Moonshine F1

A deliciously sweet variety with extra juicy kernels! Produces 3-5 cobs per plant in late summer and early autumn. **'Which?' Best Buy variety**

HHA: 2m (6ft). Harvest: Aug-Sept. Sun. Kitchen garden. Del: May-Jun.

KF8508	3 x 9cm multisown pots	£11.99
KF8509	6 x 9cm multisown pots	£14.99



Picasso

The bi-coloured cobs are around 20cm long and the kernels are incredibly tender and almost explode in your mouth.

HHA: 2m (6.5ft). Harvest: Aug-Sept. Sun. Kitchen Garden. Del: May.

KF8506	3 x 9cm multisown pots	£11.99
KF8507	6 x 9cm multisown pots	£14.99



Pot Of Gold F1

Sweetcorn 'Pot of Gold' is a dwarf variety reaching only 1.5m tall! This makes it the perfect choice for exposed sites or growing in large containers.

HHA: 1.5m (5ft). Harvest: Jul-Oct. Sun/Part Shade. Kitchen Garden, Pots.

KF8510	3 x 9cm multisown pots	£11.99
KF8511	6 x 9cm multisown pots	£14.99




Tomato

BUY 6 SAVE £4.99

Naturally cascading variety!

Tumbling Bella F1 (Terenzo) This cascading cherry tomato is perfectly designed for filling containers, window boxes and hanging baskets with a colourful crop of tasty, bite-sized fruits. **'Which?' Best Buy variety.** HHA. 30cm (12in). Harvest: Jul-Oct. Sun. Baskets, Kitchen Gardens, Pots. Del: Apr-May.

KC7396	3 Postiplugs	£8.99
KC7397	6 Postiplugs	£12.99



Marmande Continental outdoor variety. Large, irregular fruits with firm flesh and few seeds. HHA. 1.8m (6ft). Harvest: Jul-Sept. Sun. Greenhouse, Indoors, Kitchen Garden, Pots. Del: Apr-May.

KC7425 3 Postiplugs £7.99
KC3238 6 Postiplugs £9.99




Courgette

Sure Thing F1 Ideal for a small garden or greenhouse, Courgette Sure Thing needs no insects for pollination, so you'll always get a good crop of tasty fruit! HHA. 45cm (18in). Harvest: Jul. Sun. Kitchen Garden. Del: May-Jun.

KC3135 1 x 9cm pot £8.99



Aubergine

Jackpot F1 An early cropping aubergine and completely spineless making easy harvesting. Prolific dark purple fruits produced over a long period which can also be harvested as baby vegetables. HHA. 55cm (22in). Harvest: Jul. Sun. Kitchen Garden, Pots. Del: May-Jun.

KC3119 1 x 9cm pot £8.99



Cucumber

Ayda F1 This baby cucumber will give you bumper crops of little cucumbers. An all female variety which sets fruits prolifically, producing 3-5 smooth, seedless and bitter-free cucumbers around 10-12cm long. HHA. 3m (9ft). Harvest: Jun-Sept. Sun. Greenhouse, Kitchen Garden, Pots. Del: May-Jun.

KC3142 1 x 9cm pot £8.99



Rubylicious F1 What makes this variety so special is its incredible sweetness and rich, tangy flavour. This disease-resistant, new cherry tomato is the perfect mix of modern and good, old fashioned taste! HHA. 2m (6.5ft). Harvest: Jul-Oct. Sun. Kitchen Garden, Pots, Greenhouses. Del: Apr-May.

KC3199	3 Postiplugs	£7.99
KB8373	6 Postiplugs	£9.99



San Marzano This is the best of the best when it comes to a plum tomato. Deep red skins, meaty flesh and unsurpassable for making sauces! HHA. 1.8m (6ft). Harvest: Jun-Oct. Sun. Greenhouse, Kitchen Garden. Del: Apr-May.

KC7413	3 Postiplugs	£7.99
KC3239	6 Postiplugs	£9.99



BUY 2 SAVE £2.99

RocketGro **Tomato & Veg Planter** At 60 litres, this is the biggest growbag in the UK market! Perfect for all your tomato, salad and veg growing needs, it contains the perfect balance of nutrients to slow-feed your plants for 3 months. Despatch: within 24 hours.

KF3025	1 x 60 Litre	£19.99
KF3026	2 x 60 Litre	£36.99



Golden Glory F1 Courgette 'Golden Glory' F1 is a spineless courgette bearing excellent yields of bright yellow courgettes which crop over a long period. HHA. 45cm (18in). Harvest: Jun-Oct. Sun. Kitchen Garden, Pots. Del: May-Jun.

KF1007 1 x 9cm pot £8.99



Sweet Pepper

Flamingo F1 Produces heavy yields of 3½ inch (8-9cm), thick-walled fruit with sweet, crisp flesh. Has good resistance to Tomato Mosaic Virus. HHA. 50cm (20in). Harvest: Jul-Oct. Sun. Kitchen Garden, Pots. Del: May-Jun.

KF1027 1 x 9cm pot £8.99



From Heaven Orange F1 Specially bred for window boxes, containers and hanging baskets, this petite variety requires hardly any space, producing loads of sweet and crunchy fruit. HHA. 30cm (12in). Harvest: Jul-Oct. Sun. Greenhouses, Kitchen Gardens, Pots. Del: May-Jun.

KF1023 1 x 9cm pot £8.99



Sweet & Sturdy F1 A combination of two fantastic tomatoes, both red and orange. Provided in one pot with two varieties which grow perfectly together. HHA. 30cm (12in). Harvest: Jul-Oct. Sun. Kitchen Garden, Pots, Greenhouses. Del: May-Jun.

KB9717	1 x 12cm pot	£12.99
KC0502	3 x 12cm pots	£19.99



Tumbling Tom Red Produces abundant early crops of sweet and juicy cherry tomatoes throughout summer **'Which?' Best Buy variety** HHA. 30cm (12in). Harvest: Jul-Oct. Sun. Baskets, Kitchen Garden, Pots, Greenhouses. Del: Apr-May.

KB8376	3 Postiplugs	£7.99
KB8377	6 Postiplugs	£9.99



Tomato Growing Support

If you're fed up with messing around with canes and twine to keep your tomato plants upright then this durable, plastic framework is perfect for you! Dimensions: H1.1m. W31cm. Despatch: within 24 hours.

81879	Each	£14.99
KA6818	x 3	£29.99



Twitter F1 Courgette 'Twitter' is a vigorous, disease-resistant plant bearing dark green fruits which crop over a long period. HHA. 45cm (18in). Harvest: Jul. Sun. Kitchen Garden, Pots. Del: May-Jun.

KF1009 1 x 9cm pot £8.99



Choose from any one of 6 shapes to suit your own needs

Raised Modular Beds

This metal raised bed will provide the perfect base at 35cms high, suitable for any home growing, whether for your garden vegetables, herbs or flowers. Dimensions: Can be assembled into the following sizes - 150x70cm, 123x70cm, 96x70cm, 123x96cm, 96x96cm, 70cm diameter. Self assembly required. Despatch: within 24 hours.

Hunter Green

BUY 2 SAVE £19.99

KF4172	each	£59.99	KF5181	pair SAVE £19.99	£99.99
--------	------	--------	--------	-------------------------	--------



• SPECIAL OFFER • PICK & MIX VEG PLANTS • SPECIAL OFFER •

Buy any 6 x 9cm Pots for £25 - from pages 29 to 31. All veg plants are peat free on pages 26-31.



• SPECIAL OFFER • PICK & MIX VEG PLANTS • SPECIAL OFFER •

Buy any 6 x 9cm Pots for £25 - from pages 29 to 31. All veg plants are peat free on pages 26-31.



Chilli Pepper NEW

Ghost Chilli This legendary chilli pepper is one of the hottest in the world, packing a fiery punch that will test even the bravest heat seekers. 0.6-1.2m (2-4ft). Harvest: Aug-Oct. Sun. Beds, Greenhouses, Indoors, Kitchen Gardens, Pots. Del: May-Jun.

KF6452 1 x 9cm pot **£8.99**



Hot Lemon A totally unique chilli in that its flavour is as hot as a cayenne, and yet it has a distinctly tart citrus taste. This is a very productive chilli plant. HHA. 75cm (30in). Harvest: Jun-Sept. Sun. Kitchen Gardens, Greenhouses, Indoors, Pots. Del: May-Jun.

KB9694 1 x 9cm pot **£8.99**



Scotch Bonnet Red Produces short lime green fruits that ripen through orange to a dark red colour, when the skins become slightly wrinkled. The flavour is fruity with a scorching heat that lingers. HHA. 90cm (36in). Harvest: Jul-Oct. Sun. Kitchen Garden, Pots. Del: May-Jun.

KB9693 1 x 9cm pot **£8.99**



Tomato NEW

Tiny Temptations F1 These bright fruits are a breeding breakthrough in dwarf tomatoes, offering a sweet and delicious taste. HHA. 40cm (16in). Harvest: Aug-Oct. Sun. Baskets, Beds, Greenhouses, Indoors, Kitchen Gardens, Pots. Del: May-Jun.

KF6437	1 x 9cm pot (Red)	£8.99
KF7394	1 x 9cm pot (Orange)	£8.99
KF7395	1 x 9cm pot (Yellow)	£8.99

Brightly coloured super-sweet fruit



500 super sweet tomatoes from just one plant!



The worlds hottest Chilli rated by the Guinness Book of Records

Carolina Reaper Handle with extra care and delicacy as this one is not to be messed with. Before the heat kicks in there is a blend of chocolate, cinnamon, and fruity flavours. TA. 70cm (28in). Harvest: Aug-Oct. Sun. Kitchen Garden, Pots. Del: May-Jun.

KB9692 1 x 9cm pot **£8.99**



Pumpkin These mini-pumpkin shaped fruits are abundant, adorning 90cm tall plants in a profusion of colour. With a fruity and spicy taste. HHA. 90cm (36in). Harvest: Aug-Oct. Sun. Beds, Greenhouses, Indoors, Kitchen Gardens, Pots. Del: May-Jun.

KF6453 1 x 9cm pot **£8.99**



Alicante Probably the best 'non-hybrid' normal sized tomato. Crops well and reliably. Early to mature and free from Greenback, the smooth red fruit is of splendid quality. HHA. 2m (6.5ft). Harvest: Jul-Oct. Sun. Greenhouse, Kitchen Garden. Del: May-Jun.

KC3195 1 x 9cm pot **£8.99**



Orange Beauty F1 Bursting with flavour, these sweet little tomatoes are perfect for snacking on, packing into picnics or for use in colourful salads. HHA. 1.8-2m (6-6.5ft). Harvest: Jul-Oct. Sun. Kitchen Garden, Pots, Greenhouses. Del: May-Jun.

KF1034 1 x 9cm pot **£8.99**

Sweet Aperitif With its multi branching fruit trusses, this red skinned cherry tomato produces excellent yields of delicious, bite sized fruits. Each fruit weighs approximately 12g. HHA. 2m (6.5ft). Harvest: Jul-Oct. Sun. Kitchen garden. Del: May-Jun.

KA6552 1 x 9cm pot **£8.99**



Montezuma The perfect ingredient to put the heat into chilli-con-carne. The long, pointed, chocolate-brown chillies are sweet and spicy, each weighing around 15-20 grams. HHA. 1-2m (3-6.5ft). Harvest: Aug-Oct. Sun. Kitchen Garden, Pots. Del: May-Jun.

KF1015 1 x 9cm pot **£8.99**



Jalapeno These well branched plants produce good yields of shiny, plump peppers. The fruits grow up to 7cm (3") and have a comfortable heat - hot, but not too hot! HHA. 90cm (36in). Harvest: Jul-Oct. Sun. Greenhouses, Pots. Del: May-Jun.

KB9696 1 x 9cm pot **£8.99**



Havanna Gold This attractive chilli pepper produces long, golden-orange chillies with a mild heat and distinct habanero flavour. HHA. 70cm (27in). Flowers: Jun-Sept. Harvest: Jul-Oct. Sun. Greenhouse, Pots. Del: May-Jun.

KC4822 1 x 9cm pot **£8.99**



Sweet Million F1 A heavy cropping variety, producing luscious, shiny, red cherry-sized fruit that keep well over a long period. HHA. 2m (6.5ft). Harvest: Jul-Oct. Sun. Kitchen Garden, Pots, Greenhouses. Del: May-Jun.

KC9269 1 x 9cm pot **£8.99**



Sungold F1 With an exceptionally high sugar content, which easily rivals 'Gardeners Delight', making its attractive, golden-orange fruit irresistibly sweet and juicy. HHA. 2m (6.5ft). Harvest: Jul-Oct. Sun. Kitchen garden. Del: May-Jun.

KA6551 1 x 9cm pot **£8.99**



Veranda Red F1 A dwarf bush variety that can be grown in a patio pot. It can produce up to 75 fruits per plant! This rich, red cherry tomato is full of flavour and very sweet. HHA. 45cm (18in). Harvest: Jul-Sept. Sun. Greenhouses, Kitchen Gardens, Pots. Del: May-Jun.

KB5438 1 x 9cm pot **£8.99**

Vegetable Plants A-Z: Garden Ready



All veg plants are peat free.

We are pleased to offer a wide range of organically grown veg plants, which are ideal if you don't wish to grow plants from seed. All veg plants are peat free and organically grown.



Garden Ready plant sizes

Despatched at the optimum time and usually before blooms have formed for better root growth and more vigorous displays. Size: 10-15cm.

French Bean

Climbing

**BUY 30
SAVE
£6.99**



Cobra
The 'Cobra' is a delicious french climbing bean that will be produced in profusion right through to autumn if picked regularly.
HHA. 1.8m (6ft). Harvest: Jun-Oct. Sun. Pots, Kitchen Garden. Del: May-Jun.

KB9643	15 garden ready	£11.99
KF4293	30 garden ready	£16.99

Broad Bean

**BUY 30
SAVE
£2.99**



The Sutton A wonderful dwarf broad bean variety. Ideal for exposed sites, this vegetable plant will produce very large numbers of pods.
HA. 30cm (12in). Harvest: Jun-Aug. Sun. Kitchen Garden. Del: Apr-May.

KB9642	15 garden ready	£9.99
KF7010	30 garden ready	£16.99

Dwarf French

**BUY 30
SAVE
£8.99**



Safari
Enjoy delicious crops of tender, stringless French Beans. This straight, very slender french bean variety produces very fine pods around 11-12cm (4.5-5in) in length.
HHA. 45cm (18in). Harvest: Jul-Oct. Sun. Pots, Kitchen Garden. Del: May-Jun.

KB9645	15 garden ready	£11.99
KF6474	30 garden ready	£14.99



**ONLY
£29.99**

Scarecrow Double Pack

Deter birds and pests from your garden with our twin pack of scarecrows. A fun addition to your garden, these charming scarecrows will help protect seedlings, plants and flowers.
Del: 0. Dimensions: 1.8m (6ft). Despatch: Within 24 Hours.

D4454	Pack of 2	£29.99
-------	-----------	--------



Pea & Bean Tunnel

Features four arches which slot into the ground and have a mesh netting over the top, perfect for taller crops as it gives them plenty of height.
Dimensions: L180 x H180cm. 2-year warranty. Despatch: Within 3 days.

C4460		£39.99
-------	--	--------



RocketGro Fruit & Veg Compost

A 100% organic, chemical-free and peat-free compost specially formulated for all your produce growing needs. Contains the perfect balance of nutrients to feed your veg plants, young fruit bushes and fruit trees for 3 months without the need for fertiliser top-ups. Despatch: Within 24 hours.

KF3017	1 x 50 Litre	£18.99
KF3018	2 x 50 Litre SAVE £2.99	£34.99

Runner Bean

**BUY 30
SAVE
£6.99**



Scarlet Empire Produces longer, smoother, slender pods which are stringless, but remain as early, tasty and productive as its forebear. Vigorous and quick to emerge - essential qualities for early sowings. HHA. 3m (10ft). Harvest: Jul-Oct. Sun. Kitchen garden. Del: May-Jun.

KC3121	15 garden ready	£11.99
KF4296	30 garden ready	£16.99

A white-flowered & white-seeded variety!

**BUY 30
SAVE
£6.99**

Runner Bean Duo Mixed

Contains a mix of Scarlet Empire and White Swan

KC3123	15 garden ready plants	£11.99
KF4295	30 garden ready plants	£16.99

Pea

Mangetout/Sugar Snap

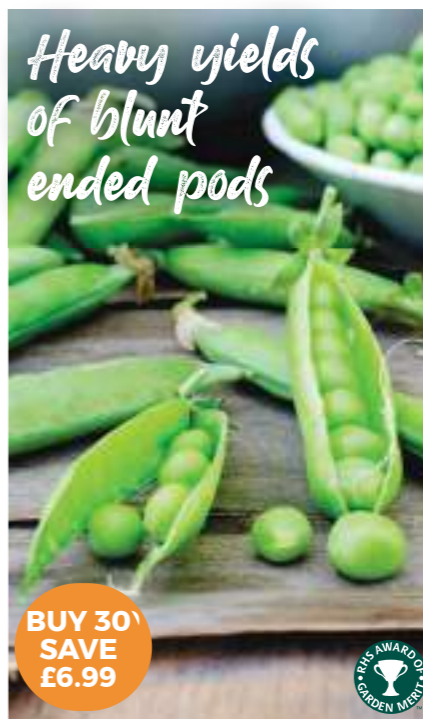


**BUY 30
SAVE
£6.99**

Spring Blush
Spring Blush' is an irresistible ornamental-edible. A tall climbing variety, this pea (mangetout) plant will produce attractive bi-coloured purple/pink blooms and lots of rose blushed and pure green pods.
HA. 75cm (30in). Harvest: Jun-Oct. Sun. Kitchen Garden. Del: May-Jun.

KB9691	15 garden ready	£11.99
KF6579	30 garden ready	£16.99

Heavy yields of blunt ended pods



**BUY 30
SAVE
£6.99**

Ambassador This pea plant will produce handfuls of blunt-ended pods, each containing up to 9 luscious green peas. Fresh or frozen, this 'Onward' type pea is high in vitamin C and tastes delicious!
'Which?' Best Buy variety
HA. 80cm (31in). Harvest: Jun-Oct. Sun. Kitchen Garden. Del: May-Jun.

KB9690	15 garden ready	£11.99
KF6578	30 garden ready	£16.99



**BUY 30
SAVE
£6.99**

Champion Of England This heritage variety was once regarded as the tastiest, most productive climbing pea that a gardener could grow. At lot has changed since the 1870's but this pea remains a fine cultivar which still deserves a place on today's vegetable plots.
HA. 2.5m (8ft). Harvest: Jul-Sept. Sun. Kitchen Garden. Del: May-Jun.

KB9688	15 garden ready	£11.99
KF6577	30 garden ready	£16.99

Grafted Veg Plants

75% more fruit
great flavour
**GRAFTED
PLANTS**
Superior quality
crops longer

**PEAT
FREE**

Grown in
our UK
nursery

SPECIAL OFFER PICK & MIX GRAFTED VEG PLANTS

Buy any 3 or more 9cm Pots for £5 each - from pages 34 to 37

Offer applies to any 1 x 9cm grafted pots from pages 34-37. Just enter a price of £5 per pot when ordering 3 or more if using the order form.

**Pick
& Mix
OFFER**

Plants produce up to 75% more fruit,
with great flavour PLUS more pest & disease resistance!

Grafted plants use rootstock which is more resistant towards soil borne pests and diseases, thus giving naturally 'easy to care for' plants which need less pest control and are ideal to grow organically.



Two tomato plants planted at the same time and treated the same way

The Grafting Process

The top of a tasty fruiting plant variety and a super strong rootstock are skilfully and meticulously removed by hand using a small blade to slice at an angle across each stem. They are then grafted together using a special clip which drops off naturally as the plant grows.

Grafting a tomato plant above the first true leaf 'fools' the plant into thinking it's older than it really is. The plant therefore produces its fruit much earlier and much lower down the stem to give you even greater yield.



Aubergine

Contains vitamins E & K. High in potassium, folate, magnesium and fibre.



Scorpio FI With this outstanding grafted variety you could be picking delicious, top quality, sleek and shiny formed aubergine fruits. HHA. 60cm (24in). Harvest: Jul. Sun. Kitchen Garden, Pots, Greenhouses. Del: May-Jun.

KC4707 1 x 9cm pot **£9.99**



Meatball FI Aubergine 'Meatball' really is the meatiest of aubergines. Large, globe-shaped fruit up to 13cm across with very dense flesh which only have a few seeds making the flavour sweeter than other varieties. HHA. 70cm (28in). Harvest: Jul. Sun. Kitchen Garden, Pots, Greenhouses. Del: May-Jun.

KC4705 1 x 9cm pot **£9.99**

Cucumber

Low in calories & refreshing.



**ONLY
£9.99**

Mini Stars FI The 'Mini Stars' may be small fruits but, they are lusciously green and exceptionally tasty. HHA. 3m (10ft). Harvest: Jul-Sept. Sun. Kitchen Garden, Pots, Greenhouses. Del: May-Jun.

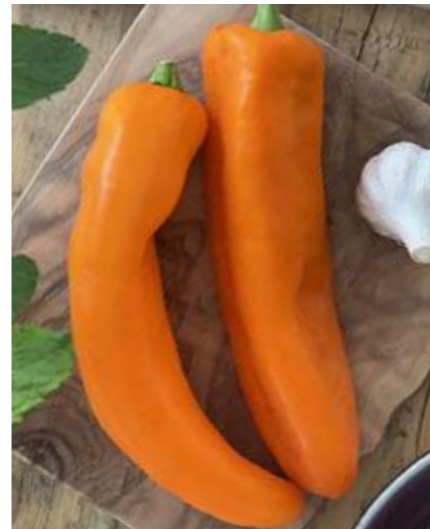
KA1630 1 x 9cm pot **£9.99**



Carmen FI Carmen cucumber plants will produce fruits that are cylindrical, very straight, slightly ribbed, dark, and glossy with a short neck. You'll have an abundance of fruits that will grow to around 34-40cm long. HHA. 3m (10ft). Harvest: Jun-Sept. Sun. Greenhouse. Del: May-Jun.

KB9670 1 x 9cm pot **£9.99**

Sweet Peppers



Cleor FI This yellow horn pepper is popular with commercial growers. Sets fruit early and readily. HHA. 90cm (36in). Harvest: Jul-Oct. Sun. Indoors, Greenhouses, Kitchen Garden, Pots. Del: May-Jun.

KC3185 1 x 9cm pot **£9.99**



NEW

**ONLY
£9.99**

Thor FI The large, long peppers of this tasty variety gradually change from green to a glossy vibrant red and can reach lengths of up to 25cm (10"). Pepper 'Thor' produces an abundance of crops throughout summer if grown in the greenhouse, or a slightly later crop if grown in a sheltered, sunny spot outdoors. HHA. 1.5m (5ft). Harvest: Jul-Oct. Sun. Greenhouses, Kitchen Gardens, Pots. Del: May-Jun.

KF6464 1 x 9cm pot **£9.99**

Chilli Pepper

*Disease resistant
and great flavour*



Medina FI A strong growing fruit with a plentiful supply of top quality chillies. *'Which? Best Buy variety.'* HHA. 50cm (20in). Harvest: Jul-Oct. Sun. Indoors, Kitchen Garden, Pots. Del: May-Jun.

KC4811 1 x 9cm pot **£9.99**



*Strong plants for
better harvests!*

Solario FI A compact habit of medium strength, the fruit is very large, dark green through to dark red to full maturity, thick-walled and smooth, early and very fertile variety. HHA. 90cm (36in). Harvest: Jul-Oct. Sun. Indoors, Greenhouses, Kitchen Garden, Pots. Del: May-Jun.

KC3175 1 x 9cm pot **£9.99**



Campor FI

Strong vigorous pepper that bears high yields of bright yellow, sweet, crisp peppers. HHA. 90cm (36in). Harvest: Jul-Oct. Sun. Indoors, Greenhouses, Kitchen Garden, Pots. Del: May-Jun.

KC3173 1 x 9cm pot **£9.99**



Eternity FI Heavy crops of thick-walled, orange fruits weighing around 180g, brings colour to the garden and kitchen and is well adapted for growing in pots. HHA. 90cm (36in). Harvest: Jul-Oct. Sun. Indoors, Greenhouses, Kitchen Garden, Pots. Del: May-Jun.

KC3181 1 x 9cm pot **£9.99**

Tomatoes



ONLY £9.99

Great taste & excellent resistance to disease



Salad

Shirley F1 Matures early, and crops heavily on short jointed plants. Nicely shaped fruits of fine quality with firm skin and scrumptious taste and texture. HHA. 2m (6.5ft). Harvest: Jul-Sept. Sun. Kitchen Garden, Greenhouses. Del: May-Jun.

KC4856 1 x 9cm pot £9.99

Tomato 'Gardeners Favourite' Collection

Contains 2 each of Shirley, Gardener's Delight & Moneymaker

KC8035 6 x 9cm pots £26.99

BUY 6 SAVE £32.95

Mini Plum



Aviditas F1

A mini plum tomato variety which will provide you with an abundance of delicious red, juicy fruits. They can be harvested individually or as a full truss at an average of 15 to 20 grams. HHA. 3m (9ft). Harvest: July-Oct. Sun. Kitchen garden. Del: May-Jun.

KB9725 1 x 9cm pot £9.99

Large Cherry



Lizzano F1

A stunning cherry tomato variety, as a bush type it will thrive in a sunny spot in the garden or large container. HHA. 50cm (20in). Harvest: Jul-Sept. Sun. Kitchen Garden, Pots, Greenhouses. Del: May-Jun.

KC4845 1 x 9cm pot £9.99

Cherry



Gardener's Delight Long trusses of small cherry-type fruit with outstanding flavour. These delicious tomatoes are an exceptional cropper outdoors or under glass. HHA. 2m (6.5ft). Harvest: Jul-Oct. Sun. Kitchen Garden, Greenhouses. Del: May-Jun.

KC4838 1 x 9cm pot £9.99

Salad



Moneymaker Harvesting from July through to September you will be lucky enough to enjoy this scrumptious fruit throughout the summer. This cordon variety is perfect for containers or planters in the greenhouse or on the patio. HHA. 2m (6.5ft). Harvest: Jul-Oct. Sun. Kitchen Garden, Greenhouses. Del: May-Jun.

KC4847 1 x 9cm pot £9.99

Large Cherry



Honeycomb F1

Great tasting golden orange-yellow, extra-large cherry tomatoes, which are sweet and juicy, with a hint of honey. Less susceptible to splitting than 'Sungold'. HHA. 2m (6.5ft). Harvest: July-Oct. Sun. Kitchen garden. Del: May-Jun.

KB9738 1 x 9cm pot £9.99

SPECIAL OFFER PICK & MIX GRAFTED VEG PLANTS

Buy any 3 or more 9cm Pots for £5 each - from pages 34 to 37

Offer applies to any 1 x 9cm grafted pots from pages 34-37. Just enter a price of £5 per pot when ordering 3 or more if using the order form.

Pick & Mix OFFER

Beefsteak



ONLY £9.99

Buffalosteak F1

Earlier ripening than the majority of other beefsteak tomatoes means you'll be harvesting Mediterranean style, big, rich flavoured fruit for months!

HHA. 2m (6.5ft). Harvest: Jul-Oct. Sun. Kitchen Garden, Greenhouses. Del: May-Jun.

KA9306 1 x 9cm pot £9.99

Beefsteak



Buffalosun F1

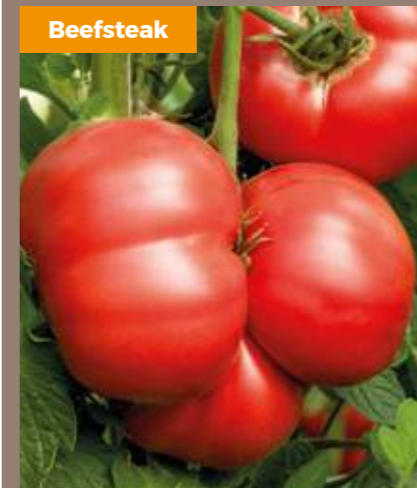
Firmer and sweeter than many, it is also disease resistant, including late blight, making it ideal for growing under cover or outside.

HHA. 1.8m (6ft). Harvest: Jul-Sept. Sun. Indoors, Greenhouses, Kitchen Garden, Pots. Del: May-Jun.

KC3205 1 x 9cm pot £9.99

A choice of 4 great blight resistant tomatoes! The Crimson Grafted Family

Beefsteak



Crimson Blush F1 (Rose Crush)

The F1 Crimson Blush is big, bold, beautiful, and blight-resistant. The best tolerance to late blight disease we have ever seen.

HHA. 2m (6.5ft). Harvest: Jul-Oct. Sun. Indoors, Greenhouses, Kitchen Garden, Pots. Del: May-Jun.

KB9727 1 x 9cm pot £9.99

Cherry



Crimson Cherry F1

The Crimson Cherry is the first blight-resistant cherry sized tomato, making it the perfect variety to be grown outside in the UK.

HHA. 2m (6.5ft). Harvest: Jul-Oct. Sun. Indoors, Greenhouses, Kitchen Garden, Pots. Del: May-Jun.

KB9729 1 x 9cm pot £9.99

Salad



Crimson Crush F1 As well as its ability to shrug off even the worst blight, Crimson Crush will provide great yields of exceptionally fine tasting, large, round tomatoes (each weighing up to 200g). *'Which? Best Buy variety'* HHA. 2m (6.5ft). Harvest: Jul-Oct. Sun. Indoors, Greenhouses, Kitchen Garden, Pots. Del: May-Jun.

KB9733 1 x 9cm pot £9.99

Plum



Crimson Plum F1 (Nagina)

A 'Roma' style plum with a rich, deep flavour. It has solid, meaty flesh with few seeds and is good for cooking and using in sauces.

HHA. 2m (6.5ft). Harvest: Jul-Oct. Sun. Indoors, Greenhouses, Kitchen Garden, Pots. Del: May-Jun.

KB9735 1 x 9cm pot £9.99

Tomato 'Crimson' Collection

Contains 'Crimson Cherry', 'Crimson Blush', 'Crimson Plum' & 'Crimson Crush'

KC7391 4 x 9cm pots SAVE £19.97 £19.99
KC8434 8 x 9cm pots SAVE £44.93 £34.99

BUY 8 SAVE £44.93

Bare Root Soft Fruit

Delivered in dormancy, at the prime time for planting, by establishing over the winter as a bare root you will guarantee yourself an excellent crop of fruit for the following year!

Raspberries

One of the most popular summer berries! Plant 45cm (18") apart; 1.8m (6') between rows.



Glen Ample A high-yielding, mid season variety that produces a heavy crop between late June and late July. Just five of the berries can weigh as much as 30gm (1oz)!
HS. 1.5m (5ft). Flowers: May-Jun. Harvest: Jun-Jul. Sun. Kitchen Garden, Pots. Del: Feb-Apr.

KC1908	6 canes	£12.99
KC1904	12 canes SAVE £5.99	£19.99



Autumn Bliss One of the most reliable autumn fruiting varieties, producing a heavy crop of large, attractive red berries from late August until mid October.
HS. 1.5m (5ft). Flowers: Jul-Aug. Harvest: Aug-Oct. Sun. Kitchen Garden, Pots. Del: Feb-Apr.

KC1914	6 canes	£16.99
KC1917	12 canes SAVE £8.99	£24.99



Glen Prosen Summer fruiting cultivar with medium-large sized fruit. Canes are thornless and upright, with moderate vigour. Suited to drier and wetter regions of the UK.
HS. 2.5m (8ft). Flowers: May-Aug. Harvest: Jun-Oct. Sun. Kitchen Garden, Pots. Del: Feb-Apr.

KC1972	6 canes	£14.99
KC1971	12 canes SAVE £9.99	£19.99

Raspberry Full Season Collection

Contains Autumn Bliss, Glen Ample and Glen Prosen

72388	9 canes	£19.99	72389	18 canes SAVE £14.98	£29.99
-------	---------	--------	-------	-----------------------------	--------

BUY 18 SAVE £14.98



Polka
Producing 2.5kg of large, deep-red berries with a deliciously sweet flavour that can be harvested from late July through to October. **'Which?' Best Buy variety**
HS. 1.5m (5ft). Harvest: Jul-Oct. Sun. Kitchen Garden, Pots. Del: Feb-Apr.

KC3053	3 canes	£9.99
12579	6 canes	£15.99
13891	12 canes SAVE £11.97	£27.99



All Gold
An outstanding autumn-fruiting variety, producing large, golden yellow fruits, with a taste that is even more exquisite than its red-fruited sisters!
HS. 1.5m (5ft). Flowers: Jul-Aug. Harvest: Aug-Oct. Sun. Kitchen Garden. Del: Feb-Apr.

KC3044	3 canes	£9.99
KC2490	6 canes	£14.99
KC3045	12 canes SAVE £17.97	£21.99



Joan J
An abundance of large, bright, juicy berries, with a truly delicious flavour. Delicious eaten fresh or can be frozen for a taste of summer later in the year.
HS. 1.5m (5ft). Flowers: Jun-Aug. Harvest: Jul-Oct. Sun. Kitchen Garden. Del: Feb-Apr.

KC3042	3 canes	£9.99
KC2488	6 canes	£15.99
KC2489	12 canes SAVE £14.97	£24.99

Strawberries

Plants supplied will be strong, open-ground runners (plants), certified under the Plant Health Propagation Scheme (PHPS). All plants will be hand graded and selected before packing. Plant strawberries 45cm (18") apart with 75cm (29") between each row. Choose a sunny, sheltered spot and dig in plenty of well-rotted manure or compost.

Long cropping periods mean more tasty strawberries!



Cambridge Favourite This mid-season strawberry produces a bumper crop of juicy orange-red fruits with an excellent flavour and texture from June to July. HP. 20cm (8in). Flowers: May. Harvest: Jun-Jul. Sun. Greenhouse, Kitchen Garden, Pots. Del: Feb-Apr.

KC3004	6 bare roots	£7.99
KC1905	12 bare roots	£9.99
KC1940	24 bare roots SAVE £15.97	£15.99



Honeoye One of the leading commercial early varieties, with bright red, very firm fruits of superb quality and flavour.
HP. 20cm (8in). Flowers: May. Harvest: Jun-Jul. Sun. Kitchen Garden, Pots. Del: Feb-Apr.

KC3005	6 bare roots	£7.99
14327	12 bare roots	£11.99
KB3075	24 bare roots SAVE £13.97	£17.99



Florence ideal for a late season harvest from the end of June to the end of July. A prolific cropper with exceptional pest and disease resistance.
HP. 20cm (8in). Flowers: May. Harvest: Jun-Jul. Sun. Greenhouse, Kitchen Garden, Pots. Del: Feb-Apr.

KC3003	6 bare roots	£8.99
13898	12 bare roots	£9.99
65254	24 bare roots SAVE £19.97	£15.99

Strawberry Full Season Collection

Contains Honeoye, Cambridge Favourite and Florence

KC8029	18 bare roots	£19.99	KB3077	36 bare roots SAVE £9.99	£29.99
--------	---------------	--------	--------	---------------------------------	--------

BUY 36 SAVE £9.99



Flamenco
If space is limited, try growing this ever-bearing variety to maximise your crop of delicious sweet and juicy fruits over a long picking period.
HP. 20cm (8in). Harvest: Jul-Oct. Sun. Kitchen Garden, Pots. Del: Feb-Apr.

KC3012	6 bare roots	£9.99
KB7472	12 bare roots	£13.99
KB7473	24 bare roots SAVE £19.97	£19.99



Mount Everest
A unique climbing strawberry that will produce runners up to 1m (39"). Produces a delicious crop of sweet, juicy fruits from June right through to September!
HP. 100cm (39in). Flowers: Apr-May. Harvest: Jun-Sept. Sun. Baskets, Greenhouses, Kitchen Gardens; Pots; Window Boxes. Del: Feb-Apr.

KC3015	6 bare roots	£9.99
KC3016	12 bare roots	£16.99



Malling Centenary
Selected for its improved flavour and looks, this easy to grow variety produces rich red berries which are full of flavour in just 60 days! HP. 30cm (12in). Flowers: May-Aug. Harvest: Jun-Sept. Sun. Kitchen Garden. Del: Feb-Apr.

KC3006	6 bare roots	£8.99
KB9410	12 bare roots	£12.99
KB9411	24 bare roots SAVE £15.97	£19.99



BUY 9
SAVE
£9.98

Gooseberry



Invicta Produces almost twice as much fruit as other varieties, from late May onwards. The flavoursome, smooth skinned fruits stay firm and retain their shape when cooked. HS. 1.2m (48in). Harvest: May-Jul. Sun/Part Shade. Kitchen Garden. Del: Feb-Apr.

40161	1 bare root	£9.99
KC1907	3 bare roots	£14.99



Blackcurrant

Ebony Heavy crops of large, firm currants - each one up to twice the size of a normal blackcurrant. HS. 1.2m (4ft). Flowers: Apr-May. Harvest: Jul. Sun. Kitchen Garden. Del: Feb-Apr.

14310	1 bare root	£7.99
KC1910	3 bare root	£14.99



Walnut

Europa 'Europa' is an especially dwarf variety of walnut, reaching only 3.5 metres tall at maturity, unlike the common walnut which reaches a towering 30 metres. HT. 3.5m (11ft). Harvest: Sept-Oct. Sun. Beds. Del: Feb-Apr.

KC5378	1 bare root	£59.99
--------	-------------	--------



Hinnonmaki Yellow Superb, hardy bushes produce a heavy crop of medium sized, greenish yellow fruits. Unlike other varieties has a delicious aromatic flavour with a hint of apricot.

'Which? Best Buy variety' HS. 1.2m (48in). Harvest: Jun-Jul. Sun/Part Shade. Kitchen Garden. Del: Feb-Apr.

14293	1 bare root	£9.99
KC1909	3 bare roots	£14.99



BUY 3
SAVE
£11.98



Redcurrant

Rovada Large luscious red fruits produce up to 2.5kg (6lb) from a single plant in a season. HS. 1.2m (47in). Harvest: Jul-Aug. Sun/Part Shade. Kitchen Gardens. Del: Feb-Apr.

14256	1 bare root	£8.99
KC2491	3 bare roots	£14.99



Plum

Victoria Delicious plums, from August, can be eaten fresh off the tree, and are great for cooking. Reliable and very heavy cropping. This variety is self-fertile. HT. 2.5m (8ft). Harvest: Aug. Sun. Kitchen Garden. Del: Feb-Apr.

14251	1 bare root	£34.99
-------	-------------	--------



Captivator Pale green fruits ripen through pink to a deep burgundy colour, with a slightly tart flavour. Can be harvested from late July and used in cooking or eaten fresh from the plant. HS. 1.2m (48in). Harvest: Jul-Aug. Sun/Part Shade. Kitchen Garden. Del: Feb-Apr.

KB2273	1 bare root	£9.99
KB2359	3 bare roots	£17.99



Rhubarb

Fulton's Strawberry Surprise The attractive stems are perfect for making delicious pies and crumbles. Ideal for growing in borders or large patio containers. HP. 60cm (24in). Harvest: Apr-Jun. Sun/Part Shade. Kitchen Gardens, Pots. Del: Feb-Apr.

13893	1 budded piece	£9.99
13894	3 budded pieces	£17.99



Rhubarb

Goliath A prolific mid- to late-season variety, once established yielding 5kg of delicious stems per crown! Tender and stringless, the thick stalks have excellent flavour. 100cm (33in). Harvest: May-Jun. Sun. Beds, Kitchen Gardens, Pots. Del: Feb-Apr.

KF0288	1 budded piece	£8.99
KF0289	2 budded piece	£11.99

Gooseberry Collection

Invicta, Hinnonmaki Yellow & Captivator

KB2360	3 bare roots	£14.99
KB2361	9 bare roots SAVE £9.98	£34.99

Best Seller!



ONLY
£17.99

Organic

An excellent
mid season
variety!

Blueberry

Bluecrop Excellent mid season variety. Fully hardy compact shrub, providing white flowers in spring, and colourful foliage in winter. HS. 1.2m (4ft). Harvest: Jul-Aug. Sun/Part Shade. Kitchen Garden, Pots. Del: Feb-Apr.

KC3226	1 x 1.7 litre pot organic	£17.99
--------	---------------------------	--------



Organic

Blueberry

Patriot Renowned for having especially large and well flavoured berries and consistently high yields. An early season variety, it's often the first one to ripen. HS. 1.5m (5ft). Harvest: Aug. Sun/Part Shade. Kitchen Gardens, Pots. Del: Feb-Apr.

KC9548	1 x 1.7 litre pot organic	£17.99
--------	---------------------------	--------



Organic

Raspberry

Tulameen Grow this enormously versatile summer fruiting long cane variety in a container! The long canes look stunning making a decorative and productive feature. HS. 1.5m (5ft). Harvest: Jul-Aug. Sun. Kitchen Gardens, Pots. Del: Feb-Apr.

KC3062	1 x 1.7 litre pot organic	£17.99
--------	---------------------------	--------



Organic

Raspberry

Autumn Bliss One of the best and most reliable autumn fruiting varieties, producing a heavy crop of large, attractive red berries. HS. 1.5m (59in). Harvest: Aug-Oct. Sun. Kitchen Gardens, Pots. Del: Feb-Apr.

KC3061	1 x 1.7 litre pot organic	£17.99
--------	---------------------------	--------



Organic

Redcurrant

Rovada Large luscious red fruits are produced in profusion from mid July through August, producing up to 2.5kg (6lb) from a single plant in a season. Bears its generous crop in long strings. HS. 1.2m (47in). Harvest: Jul-Aug. Sun/Part Shade. Kitchen Gardens. Del: Feb-Apr.

KC3223	1 x 1.7 litre pot organic	£17.99
--------	---------------------------	--------



Organic

Blackberry

Triple Crown Rightfully named for its three superb qualities, flavour, productivity and vigour! Hardy with good disease resistance it is a virtually thornless, semi-erect, trailing plant with large, firm, sweet fruit. HS. 2m (6.5ft). Harvest: Jul-Aug. Sun. Kitchen Gardens, Trellis. Del: Feb-Apr.

KC3225	1 x 1.7 litre pot organic	£17.99
--------	---------------------------	--------



Organic

Whitecurrant

White Versailles Sweeter than traditional red currants usually seen, this is a popular and hardy. Lovely pale-yellow flowers bloom and will supply you with a reliable yield for years to come. HS. 1.2m (4ft). Harvest: Jul-Aug. Sun/Part Shade. Kitchen Gardens. Del: Feb-Apr.

KC3224	1 x 1.7 litre pot organic	£17.99
--------	---------------------------	--------

Protect your plants from the elements!



Green

Traditional Greenhouse

A great garden building, this spacious metal greenhouse has a strong aluminium frame which has been coated in green paint for a stylish finish. A sliding door provides access and the greenhouse comes with a large roof vent so you can let cool air into this greenhouse during hot summer days. Glazed with 100% shatterproof polycarbonate glazing which is a great alternative to glass, much safer for gardens used by children and pets. Polycarbonate also protects plants from harmful UV rays and burning in hot summer rays. Integral gutters help collect rainwater that can be used at your convenience. There is also a heavy duty galvanised zinc steel base to provide extra strength. All packs include fixtures, fittings and assembly instructions.

All packs include fixtures, fittings and assembly instructions. Staging not included but can be purchased separately. Despatch: within 24 hours.

D9399	W6' 2" x D4' 3" x H6' 6"	£329.99
G0467	W6' 2" x D6' 2" x H6' 6"	£399.99
G0468	W6' 2" x D8' 3" x H6' 6"	£479.99



Wooden Cold Frame

Extend the growing season and keep your plants, young seedlings, vegetables or flower beds protected from harsh weather conditions. Constructed using strong and durable fir wood with polycarbonate panels which allow sunlight to penetrate without the risk of heat escaping. Features a hinged lid for easy access.

Dimensions: L90 x W48 x H49.5cm. Self assembly required. 12-month guarantee. Despatch: within 3 days.

G2164	£49.99
-------	--------



Light Green - Large (L80xW60xH30cm)



Light Green - Medium (L60xW60xH30cm)



Light Green - Extra Large (L120xW90xH30cm)

FROM £34.99

These raised beds are the ideal space to start your home garden!

Metal Raised Garden Bed

This practical raised bed comes in a choice of sizes and is a perfect alternative for making your outdoor space into an allotment, perfect for the gardener who wants to have traditional style with modern features. Extremely durable, strong but lightweight, they are made to last, produced in weatherproof hot dipped galvanised zinc steel and finished in a lovely shade of sage green, an additional feature is a rubber edging safety band, this will prevent sharp edges and finishes it off nicely.

Dimensions: Medium L60 x W60 x H30cm. (2kg), Large L80 x W60 x H30cm. (2.5kg), Extra Large L120 x W90 x H30cm. (3.5kg). Despatch: within 3 days.

G4789	medium - each	£34.99
KF0536	medium - pair	£59.99
G4790	large - each	£44.99
KF0537	large - pair	£79.99
G4791	extra large - each	£59.99
KF0538	extra large - pair	£99.99



FROM £34.99

Large - 12 shelf



Medium - 6 shelf



Mini - 4 shelf

Premium Portable Greenhouse

Perfect for smaller gardens or an area where a permanent greenhouse is not possible. Durable and easy to assemble with powder-coated steel frames and waterproof PE protector cover. Supplied with metal ground pegs.

Del: 0. Dimensions: L69 x W49 x H158cm. Base cover not included. 12-month guarantee. Despatch: within 7 days.

Mini Greenhouse (4 tier)			
G2160	W69 x H158 x D49cm	£34.99	
Medium Walk-In Greenhouse (6 shelf)			
G3345	W143 x H193 x D73cm	£49.99	
G3346	spare cover	£29.99	
Large Walk-In Greenhouse (12 shelf)			
G3348	W143 x H195 x D143cm	£79.99	
G3349	spare cover	£39.99	

Apex Cloche

Keep delicate plants protected from all weather conditions with this garden cloche. It features double-stitched seams for maximum durability and has two floor to roof zipped windows that can be rolled up for easy access; these also help control the temperature inside the cloche.

Dimensions: L180 x W90 x H90cm. Frame: Steel tube, Cover: 130g. PE Mesh. 12-month guarantee. Despatch: within 3 days.

G4797	£34.99
-------	--------



Micromesh Tunnel

Ultra-fine 0.6mm mesh, small enough to keep out cabbage root fly, carrot-fly, white fly, onion fly, flea beetle, vine weevil, aphids and others, while allowing air and water through.

Dimensions: Standard L300 x W45 x H30cm, Giant L300 x W60 x H45cm. Despatch: within 3 days.

KC3596	standard	£24.99
KF3547	standard x 2 SAVE £4.99	£44.99
KC3595	giant	£32.99
KF3553	giant x 2 SAVE £5.99	£59.99



Strulch

An amazing combination of weed control, pest control and fertiliser all in one convenient product! This straw mulch is an environmentally friendly alternative to peat compost for its nutrient value and a more effective way of using wheat straw as mulch. **'Which?' Best Buy** Despatch: within 24 hours.

KC3830	1 x 100 litre bag	£19.99
KC3827	2 x 100 litre bags	£29.99
KF6938	10 x 100 litre bags	£139.99
KF6939	20 x 100 litre bags	£269.99



Slug Gone Pellets

A safe, natural way to get rid of slugs and snails without killing them ... and an organic soil conditioner too! These 100% pure sheep wool pellets are a chemical-free, environmentally friendly way to protect flowers, fruit and vegetables from slugs and snails. Despatch: within 3 days.

KC3811	10 litre pack	£32.99
--------	---------------	--------



FROM £9.99

Bell Cloche

Simply place over your plants to create a microclimate that will encourage speedy growth and form a barrier from pests. Adjustable air vent aids temperature and humidity control. Dimensions: H30 x D33cm. Despatch: within 3 days.

KB2852	each	£9.99
KB3817	x3	£14.99
KB3818	x5 SAVE £29.96	£19.99

Natural goodness. made in Somerset



RocketGro Peat Free Compost

Seed & Cutting Compost

RocketGro Seed & Cutting Compost with added John Innes is a professional grade growing media perfect for seeds, cuttings, seedlings, pricking out and young plants.

KF3027 20 Litre £16.99

Multi-Purpose Compost Stage 2&3

RocketGro Multi-Purpose Compost is a superior blend of professional quality compost for pots, containers, window boxes, planters, hanging baskets and planting out.

KF3029 40 Litre £18.99

Soil Improver

Works in harmony with your soil to revitalise and boost soil fertility. Use all year round and either dig into your borders or adopt a no-dig system and simply let the worms, rain and birds do the work.

KF3013 50 Litre £18.99

Magic Mulch

This 100% organic, sustainable, chemical-free and peat-free mulch has been specially formulated to supercharge the health of your garden.

KF3011 50 Litre £16.00



Moorland Gold Compost

A sustainable, organic compost range based on peat particles that are collected from lakes and dams after being naturally filtered out of the soil and washed into rivers and streams. These peat particles are filtered, blended with additional organic nutrients and processed into a fertile compost with no artificial ingredients. Rich in naturally occurring minerals and trace elements to promote strong and healthy growth. Despatch: within 3 days.

Potting And Container Compost		
KC3727	40 litres	£24.99
Multipurpose Compost		
KC3725	40 litres	£24.99
Natural Peat Alternative		
KC3726	40 litres	£24.99
Seed And Cutting Compost		
KC3728	40 litres	£24.99

ONLY £24.99

Seaweed Meal

Chase seaweed meal is a wholly organic soil and plant food. Made purely with dried and milled seaweed, it is a slow-release fertiliser and soil conditioner, rich in trace elements and amino acids. Despatch: within 3 days.

KC3804 5kgs £49.99

Rootgrow™ Mycorrhizal Fungi

A completely natural, plant-friendly fungi that enables plants to create a secondary root system that will support it for its lifetime. Improves water and nutrient uptake, vigour, more flowers and heavier cropping, ability to cope with dry conditions and less reliance on synthetic fertiliser. Ideal for cuttings and young plants, seeds and bulbs, roses, shrubs, trees and edible varieties. Despatch: within 72 hours.

KC1012 150g £9.99
KC1019 2 x 150g SAVE £2.99 £16.99

100% peat-free compost. Endorsed by the RHS

SylvaGrow Compost

SylvaGrow is a unique blend of fine bark, wood fibre (bi-products of sustainably managed British forests) and coir (from a single known source) plus sterilised loam and sand. It contains balanced nutrients sufficient for the first 4-6 weeks of growth. SylvaGrow does not contain peat or green waste compost. Despatch: within 24 hours.

Multipurpose Compost		
KC3788	1 x 40 litre bag	£21.99
Multipurpose Compost with John Innes		
KC3789	1 x 40 litre bag	£22.99
Organic Compost		
KC5680	40 litre bag	£22.99
Peat-free planter for organic growing		
KC3790	45 litre bag	£21.99
Farmyard Manure		
KC3787	50 litre bag	£19.99
Ericaceous Compost (Peat Free)		
KC3786	1 x 40 litre bag	£22.99
Pine Mini Mulch		
KC3785	1 x 50 litre bag	£29.99
KC3784	2 x 50 litre bags SAVE £14.99	£44.99



Wool Compost

This all-purpose wool and bracken compost is a peat-free, sustainable potting compost that is 100% natural and made from renewable British materials. The wool gives excellent water retention and provides slow-release nitrogen, while the bracken is a source of potash, which stimulates flowers and fruit. Despatch: within 24 hours.

KC3896 1 x 30 litre bag £20.99
KC3897 2 x 30 litre bags £34.99

Wool Wool Compost For Seeds

This peat-free, sustainable seed compost has been shown to promote germination, root system development and healthy growth of seedlings. Despatch: within 24 hours.

KC3903 1 x 12 litre bag £19.99
KC3902 3 x 12 litre bags £39.99

Wool Compost For Veg And Salads

This peat-free, sustainable wool compost is blended to provide the optimum nutrient balance for growing healthy and nutritious organic vegetables, salads and fruit. Despatch: within 24 hours.

KC3905 1 x 30 litre bag £19.99
KC3904 2 x 30 litre bags £34.99



Adaptable & easy to assemble

**BUY 2
SAVE
£49.99**



Sage Green

Original Veggie Bed

The clever flat-pack design can be set up in six different ways to suit the size and shape of your plot. Simply lay it out in a rectangle or square to the dimensions required, then assemble it using the hardware and handy tool provided - it's really that simple! The kit even includes a plastic edging to protect the top edge, and give an attractive finish. Dimensions: Oblong: 1.6m x 0.6m. Small Rectangular: 0.9m x 0.6m. Small Square: 0.6m x 0.6m. Rectangular: 1.3m x 0.6m. Large Square: 0.9m x 0.9m. Large Rectangular: 1.3m x 0.9m.. Despatch: Within 3 days.

Sage Green

KC0194 each £99.99
KC0196 pair **SAVE £49.99** £149.99

Paperbark

KC0193 each £99.99
KC0195 pair **SAVE £49.99** £149.99

More garden
equipment
on pages 42-45

Paperbark

If you aren't already a
Garden Organic member...

Join Garden Organic

In return you will have access to a wide range of benefits including:

MEMBERS ENJOY
10% OFF
EVERYTHING IN THIS
CATALOGUE

and at www.organiccatalogue.com

- The Organic Way members' magazine three times a year
- Discounted rates for Garden Organic's organic growing webinars and courses
- Access to an online members-only area of the website with organic growing fact-sheets, a forum and a gardening enquiry line
- Free or discounted entry to a range of partner gardens around the UK, including Garden Organic's own showcase organic garden



It costs from just £33 per year to become a member. For more details and how to join, go to the Garden Organic website www.gardenorganic.org.uk/join-us

**garden
organic**

Registered charity no. 298104 (England and Wales) and SC046767 (Scotland)

OG24.004.01
SUOC224A

Dear Organic Gardener

Welcome to your 2024 Seeds, Plants & Equipment Catalogue

With spring around the corner, we have packed this edition with best selling seed, favourite veg varieties and flavoursome fruit plants to really get your organic garden growing this season.

A-Z vegetable seeds can be found on pages 6-23, including best selling Carrot Autumn King 2 on page 12, and the versatile and fast growing Mizuna Red & Green Mixed on page 18, ideal for salads and stir fries.

Turn to pages 26-37 to see our range of peat free, organically grown vegetable plants including a selection available in our PICK & MIX SPECIAL OFFER - any 6 x 9cm veg plants for £25, on pages 29-31.

We have Garden Ready pea and bean plants on pages 32-33, supplied at the best time for planting out in the garden, and Crafted veg plants from page 34, providing pest and disease resistance as well as 75% more fruit.

As always, it is difficult to fit everything into one catalogue so if you're looking for even more choice be sure to visit www.organiccatalogue.com to view the full range.

Have you subscribed?

Don't forget to include your email address when placing an order using the order form overleaf.

There are many benefits to subscribing to our newsletters:

- Exclusive Offers - only available to email subscribers.
- New Varieties - you will be the first to hear.
- Tips & Guidance - get growing with expert horti-hints.

Happy Gardening!

The Organic Catalogue Team

PS. Don't forget that members of Garden Organic benefit from an additional 10% off all prices listed within this catalogue and online. Turn to page 46 to see details of how to join!

Giving your plants the best possible start

Maxicrop Original Organic Seaweed Extract



Maxicrop will give your plants:

- Strong healthy root system
- Greener, healthier leaves
- Better establishment
- Improved root growth
- More energy for growth
- Greater nutrient availability
- Reduced stress during transit

We can treat your plants for **JUST £1** see overleaf

KA4022 500ml £11.99
KB0192 2 x 500ml £19.99

Your SPECIAL OFFERS...

£2.99 with any order

Tomato Grow Bag Collection
KF2855 3 Postiplugins Usually £6.99

£4.99 with any orders over £20

Spring Planting Garlic Flavor
KC2330 2 Bulbs Usually £7.99

£4.99 with any orders over £40

Raspberry Glen Ample
KC3040 3 Canes Usually £9.99

£4.99 with any orders over £55

Asparagus Gijnilm
KB2058 5 Crowns Usually £11.99

Your 2024 Organic Gardening Catalogue is inside...



See inside **for more SPECIAL OFFERS**

YOUR SPECIAL OFFERS



USE OFFER CODE:
SU0CC224A
When ordering to receive offers.

Return address:
Organic Gardening,
West Point Business Park
Westland Square
Leeds LS11 5SS



OFFER CODE